



Vision, Mission and Values

The Community Foundation of Ottawa is a trusted centre for community philanthropy.

We accomplish this by:

- being known and respected as an independent resource for addressing issues and by connecting donors with granting opportunities;
- playing a major role in enhancing the nature and scope of philanthropy, primarily in the local community but also nationally and internationally; and
- expanding both the assets and the number of expected gifts, including endowments for future generations to support changing issues.

We earn the community's respect and support by being innovative and flexible and by maintaining the highest standards of excellence, efficiency and accountability in all of our endeavours.

Please help us to keep our operating costs down - if you would prefer to read our annual report on-line instead of receiving this copy, contact us as 236-1616 to let us know. Thank you

Contents

Message from the Chair and the President	2
Highlights of 2003	4
Tribute to Gerald K. Bouey	6
2003 Board of Governors	8
The Strength of the Community Foundation	10
<i>Nominating Committee</i>	10
Standing Committees	10
<i>Investment Committee</i>	10
<i>Grants Committee</i>	11
<i>Audit Committee</i>	11
Special Programs, Committees and Task Forces	12
Professional Advisors Program	12
<i>Professional Advisors Steering Committee</i>	12
<i>Accountants Advisors Circle</i>	12
<i>Financial Planners Advisors Circle</i>	12
<i>Insurance Advisors Circle</i>	13
<i>Investment Advisors Circle</i>	13
<i>Lawyers Advisors Circle</i>	13
ArtsSmarts Program	14
Board Alumni Committee	14
Financial Scenario Planning Task Force	15
Spending Policy Task Force	15
Investing in People Award	16
Funds	18
2003 Grants	25
Administration and Sponsors	38
Volunteers	38
Generous Contributors to	
Operations and Special Projects	38
Celebration 2003 Volunteers	38
Staff	39
Financial Statements	40
Family of Founders	45

You may obtain the French version of this annual report from the Community Foundation of Ottawa office. The English and French versions of this report are also available on our web site at: www.communityfoundationottawa.ca.

On peut se procurer la version française de ce rapport annuel en s'adressant à la Fondation communautaire d'Ottawa. Les versions anglaise et française de ce rapport sont aussi disponibles sur notre site web au : www.communityfoundationottawa.ca.

Message from the Chair and the President

In last year's annual report we told you that we were celebrating the first fifteen years of the Community Foundation's history. And with the excitement that comes from pride and success we pronounced ourselves celebrating the "first fifteen years of forever".



Maureen A. Molot, PhD
Chair of the Board
of Governors

Our youthful confidence has not been misplaced. Our asset growth has been steady - now standing at a total of \$70 million - and in 2003 we distributed \$5.7 million in grants. A solid base for a promising future. We anticipate an exciting year ahead with continued asset growth.

As always, we take our stewardship responsibilities very seriously and we protect our assets fiercely. We sustained our growth, even during the past few difficult years when many other endowment funds did not manage to do so. Careful stewardship has been a guiding principle for successive Boards of Governors and despite our record of success and our youthful exuberance, we have never let ourselves believe that we are immune from the hard reality of a tough economy.

Mindful of that, this past year we undertook some solid financial planning to ensure the Foundation could cope with a sustained downturn in the markets. We struck two task forces, a Financial Scenario Planning Task Force, which examined how the Foundation would implement expenditure reductions should this ever become necessary, and then a Spending Policy Task Force, which proposed a way to ensure our capacity to make distributions, even in years when investment returns are low. The Board of Governors accepted the recommendations of both groups thereby putting us in a strong position to meet the challenges which may lie ahead.



Barbara McInnes
President & CEO

But, of course, the real bottom line, and our reason for being is the impact of the Community Foundation on the life of Ottawa, this city that we love. Our ability to make timely, thoughtful and much-needed grants is helping to harness and leverage the city's talents, hopes and overall assets. However, that's just part of it. Our growing success in partnering and forging relationships with other philanthropic groups, different levels


of government and corporations is equally important. It means the Community Foundation is playing a key role at the center of philanthropy in the city. A role we have earned through the strong credibility we've established over our sixteen years.

Success in 2003 was also made possible thanks to a small committed staff along with our many dedicated volunteers. Their time and expertise is always generously given and gratefully received. And we are deeply indebted to our Board of Governors, whose guidance underlies all our activities. We said goodbye to Russell Mills, Peter Reid, John Kelly, Mary Ellen Morris and Jean-Claude Bouchard, all of whom played a vital role during their terms on the Board and will now be welcomed to the Board Alumni Committee. In their place, we welcome Coralie Lalonde, Alex Munter and Abla Sherif.

These words of thanks and this picture of accomplishment would be incomplete without special mention of a dear friend and supporter, Gerald Bouey. We shall always miss his wisdom and humor. From our earliest days, his support and advice helped to create a Community of Foundation of Ottawa now so well-positioned for the future.

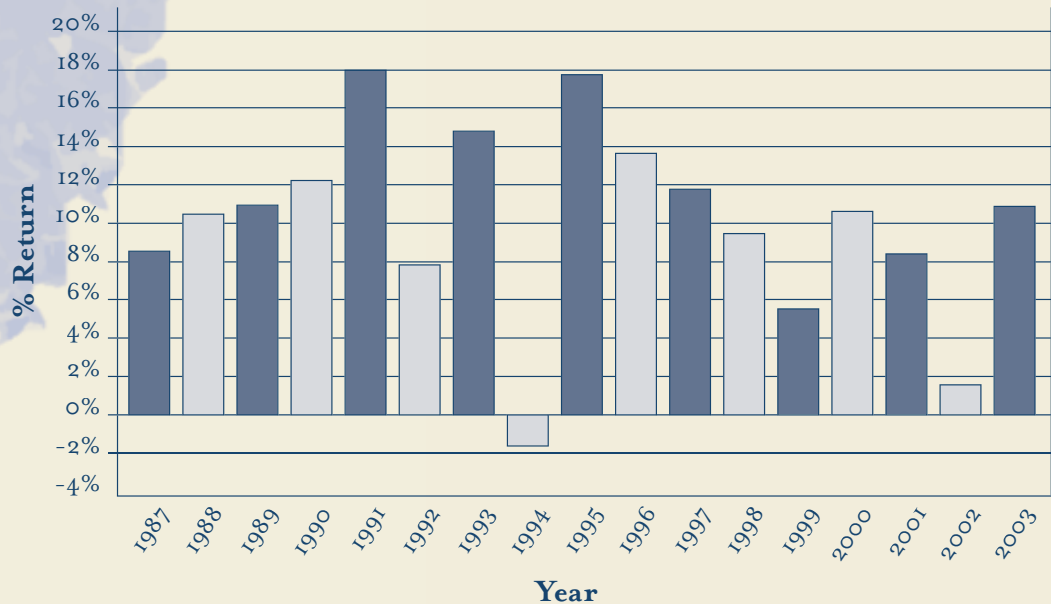


Maureen A. Molot, PhD
Chair of the Board of Governors



Barbara McInnes
President & CEO

Highlights of 2003



Key statistics:

Return on investment	10.85 %
Total donations received	\$4.9 million
Total grants approved	\$5.7 million
Total assets	\$70 million

- ▲ As a community convener and philanthropic leader, we played a significant role locally, nationally and internationally.

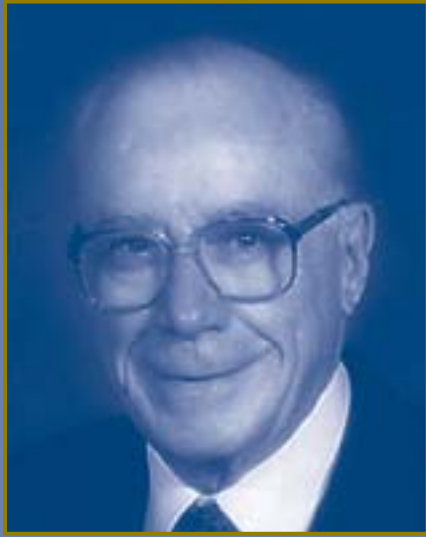
Locally, we joined forces with the City of Ottawa to convene the Asset Based Community Development network. Asset Based Community Development (ABCD) is a grantmaking approach that identifies, builds on and supports the personal, social and economic assets of a community. Over the last few years, the Community Foundation has embraced this approach and played a pivotal role in establishing the ABCD Network to identify local initiatives that support ABCD. In 2003, we worked closely with the Social Planning Council to organize a conference on ABCD which took place in February 2004.

Nationally, we continued to play a vibrant role on various Community Foundations of Canada (CFC) initiatives, and provided consultation and advice to specific community foundations in Canada.

Internationally, as our reputation grows, we are increasingly being looked to for advice from the US and Europe.

- ▲ A total of 33 new funds were set up, with donor-advised funds continuing to be the most popular option among donors. Seven organizations entrusted their endowments to our care and we received five deferred gifts - a good sign for the future.
- ▲ We played a key role in designing and launching a leading edge national partnership with the BMO Financial Group, providing a model for imminent partnerships with other financial institutions.
- ▲ Our goal to step up our marketing efforts in conjunction with the marking of our fifteenth anniversary paid off with unprecedented media coverage including an excellent editorial in the Ottawa Citizen; a packed-to-capacity audience at our annual Celebration event featuring a return engagement by John McKnight; and the re-vamping of our web-site launched early in 2004.
- ▲ By working together with the donors of advised funds, we were able to significantly extend our grantmaking efforts farther than ever before. In 2003, we were able to fund all the high and medium priority applications approved during the course of the year. We put particular emphasis on reaching out to the francophone and multicultural segments of the community and we expect to see the results of this with the grant applications submitted in 2004.

Tribute to Gerald K. Bouey



Gerald Bouey

Gerald Bouey lived his professional life on the national stage. But it was right here in Ottawa that he spent so much of his volunteer energy. And the Community Foundation, and our community, is the better for it.

The newspaper tributes to him portrayed the man whose qualities shone through the difficult and public arena of federal finances - a man of principle, respectful of all viewpoints, courageous in his convictions. Here at the Community Foundation office, we - staff and co-volunteers - saw those same qualities time and again in his interactions with us. And there were many. A month would not go by that he would not be involved in a meeting or a phone call on an issue or idea.

He was serving his second term as Chair of the Investment Committee. To this pivotal position he brought his usual great care and deliberation. His wisdom and expertise over the years helped ensure that the Foundation has one of the best records of endowment management on the continent.

In discussions he was always thorough and well-prepared. A simple verbal report was never off-the-cuff, but always based on carefully written documentation. He stated his opinions clearly, and made sure they were known. He never feared going against the grain. And when he spoke, everyone in the room listened.

This was the Gerald Bouey so many of us here saw so often. But his hand in the business of the Foundation actually goes back farther and deeper than that. Sixteen years ago, when the Community Foundation was more vision than reality, its founders determined that much of its future credibility rested on the choice of a respected Board of Governors. The selection of that Board was put into the hands of a Nominating Committee, a group representing key public officials. The most senior member of that committee was the Governor of the Bank of Canada, and the man in the chair was Gerald Bouey. This proposed governance model meant a great deal to the Foundation's early viability and much rested on the Governor's agreement to it. Gerald Bouey believed in the idea of a community foundation and he believed in its value for Ottawa. He lent his name and the prestige of his office and reputation to this venture...and the rest is...a sixteen-year history of achievement and success.

It is difficult to sum up in a few words the extent of his impact on us. In fact, the relationship was something of a family affair: his wife Ann chaired the inaugural meeting of the Community Foundations of Canada and his son Bob was instrumental in starting our own Foundation-supported, high-profile school breakfast program. However, the words we need now are really just a few, but truly heartfelt: Gerald Bouey, thank you.

“His wisdom and expertise over the years helped ensure that the Foundation has one of the best records of endowment management on the continent.”

2003 Board of Governors

Executive



Chair
Maureen A. Molot, PhD
*Professor, Norman Paterson
School of International Affairs,
Carleton University*



Past Chair
Russell A. Mills*
*Dean, School of Media
& Design, Algonquin
College*



Treasurer
Peter C. Reid*
*President, Reid
Edison Inc.*

Members of the Board



Manjit Basi
Owner, The Body Shop



Jean-Claude Bouchard*
*Associate Deputy Minister,
Fisheries & Oceans Canada*



Gerald K. Bouey, CC
*Former Governor,
Bank of Canada
Deceased
February 6, 2004*



Jacquelin Holzman
*Chair, Ottawa Health
Research Institute
Former Mayor, City
of Ottawa*



John B. Kelly*
*President,
Nexinnovations*



Coralie Lalonde**
*Founder & CEO,
Katsura Investments*



Robert J. Laughton, QC
*Partner, Gowling, Lafleur
Henderson LLP*



Mary Ellen Morris,
FCA*



Secretary
 Gilles Paquet, CM
*Research Fellow, School
 of Political Studies,
 University of Ottawa*



President & CEO
 Barbara McInnes



Alex Munter**
*Visiting Professor,
 University of Ottawa*



James R. Nininger, PhD
*Corporate Director, Former
 President & CEO, Conference
 Board of Canada*



Ronald W. Robertson
*Managing Partner,
 Ray & Berndtson/
 Robertson Surrette*



Abla Sherif, PhD**
*Director, International
 Education Centre,
 Algonquin College*



Gordon Smith
*Executive Vice-
 President, Hewson
 Bridge + Smith*



Scott A. Wilson, FCA
*Partner, PricewaterhouseCoopers
 LLP*



Honorary Legal Counsel
 Gordon J. McCay,
 BSC, LL, TEP
Partner, Low, Murchison



**Honorary Lifetime
 Member**
 Grete Hale, FHSC, GCLI
Chair, Morrison Lamothe Inc.

The Strength of the Community Foundation

The energy behind the Community Foundation originates with a strong Board of Governors supported by a small, dedicated staff along with a team of volunteers. Together, they provide the skills and resources to get things done efficiently, effectively and with the highest professional standards.

Volunteers supplement the resources of the Community Foundation by donating their time and expertise. They play integral roles on all committees, task forces and special programs.

Nominating Committee

The Nominating Committee appoints individuals of integrity and ability to serve on the Community Foundation's Board of Governors. The composition of this committee is established in the Community Foundation's bylaws. Members serve by virtue of their positions of responsibility and authority in the community. The Governor of the Bank of Canada as Chair, provides outstanding leadership, and the dedication of Committee members ensures that the Community Foundation is led by a diverse group of well-respected and committed people. The process also ensures good management in the long term. The Nominating Committee appoints 12 of the members who make up the Board of Governors. The Board may make two additional appointments itself.

Nominating Committee Members

Chair: David Dodge, *Governor, Bank of Canada*

His Worship Bob Chiarelli, *Mayor, City of Ottawa*

The Honourable Madame Justice Monique Métivier, *Regional Senior Justice for the East Region*

Robert Gillett, *President, Algonquin College*

Gail Logan, *President, Greater Ottawa Chamber of Commerce*

Gilles G. Patry, *Rector & Vice-Chancellor, University of Ottawa*

Maria Barrados, *President, Public Service Commission, represented by Scott Serson*

Robert Miller, *Chair, Champlain District Health Council*

Standing Committees

While the Board of Governors provides a broad perspective, it also depends on outside volunteers to give advice in a range of areas. The Investment, Grants and Audit Committees are composed of Board members and outside volunteers appointed by the Board.

Investment Committee

The Investment Committee makes recommendations to the Board regarding investment policy and strategy including asset allocation and performance objectives. The Committee also recommends the appointment of Investment Counsel and monitors its performance.

Investment Committee Members

Chair: Gerald K. Bouey, CC, *Former Governor, Bank of Canada (Deceased February 6, 2004)*
Peter Conradi, *President, ALMI Consulting Inc.*
James G. Frank, *Former Chief Economist, The Conference Board of Canada*
Nancy Graham, *Partner, PWL Advisors*
Roger Greenberg, *President, Minto Developments Inc.*
Mary Ellen Morris, *BDO Dunwoody LLP (Retired)*
Brian Toller, *President, Tolcor Investments Ltd.*
Scott A. Wilson, FCA, *Partner, PricewaterhouseCoopers LLP*
Investment Counsel: P. J. Doherty & Associates Co. Ltd.
Ex-officio: Maureen A. Molot, PhD, *Chair, Board of Governors*

Grants Committee

The Grants Committee assists the Board in developing grantmaking strategy, establishing priorities, reviewing applications and recommending grants. The Grants Committee is composed of Members and Advisors. Members are appointed by the Board and include Board members as well as people from the community who are knowledgeable about particular or general issues such as child poverty, education or the arts. Advisors are official representatives of the other major grantmakers in the community.

Grants Committee Members

Chair: Jean-Claude Bouchard	Denise Mattok
Deputy Chair: Manjit Basi	Msgr. Peter Schonenbach
Diane Holmes	Gordon Smith
Martha Hynna	Ex-officio: Maureen A. Molot, PhD

Grants Committee Advisors

Irene Bilinsky, <i>Ontario Ministry of Community and Social Services</i>	Jean-Paul Gagnon, <i>Ontario Trillium Foundation</i>
Dan Chenier, <i>City of Ottawa</i>	Linda Morris, <i>City of Ottawa</i>
Sheila Cranmer-Byng, <i>United Way/Centraide Ottawa</i>	Nicole Zuger, <i>City of Ottawa</i>

Audit Committee

The Audit Committee ensures that the Community Foundation has the appropriate systems of internal financial control to comply with legal, ethical and regulatory requirements, as well as with policies approved by the Board. The Committee is composed of the officers of the Board and one external member.

Audit Committee Members

Chair: Maureen A. Molot, PhD, *Chair, Board of Governors*
André Bussière, *Ernst & Young LLP*
Russell A. Mills, *Past Chair, Board of Governors*
Gilles Paquet, *Secretary, Board of Governors*
Peter C. Reid, *Treasurer, Board of Governors*

Special Programs, Committees and Task Forces

Professional Advisors Program

The Community Foundation relies on the donated expertise of allied professionals such as lawyers, accountants and financial planners in developing complex gifts and providing donors with maximum tax relief. They also help develop and foster the charitable impulse among their clients and spread the word among their colleagues. The Community Foundation's Professional Advisors Program is led by a Steering Committee which is composed of the chairs of five advisors' circles, one for each estate planning profession. Together they serve as a resource to and champion of local philanthropy.

Professional Advisors Steering Committee

Chair: K. Thomas Grozinger, *Royal Trust Corporation of Canada*
Patricia MacCallum-Lord, *Scotia Private Client Group*
Gordon J. McCay, *Low, Murchison*
Michael Mott, *Retirement, Estate & Investment Planning*
Garry Stearns, *Clarica Financial Services*
Paul B. St. Louis, *BMO Harris Private Banking*
Bob Strachan, *BMO Nesbitt Burns*
Scott A. Wilson, *PricewaterhouseCoopers LLP*

Accountants Advisors Circle

Chair: Scott A. Wilson, *PricewaterhouseCoopers LLP*
Charles Armstrong, *KPMG LLP*
Ron Batt, *Ernst & Young LLP*
Bill Davis, *R. H. Bounsall & Co.*
Allan Lumsden, *PricewaterhouseCoopers LLP*
Jim McIntyre, *McIntyre & McLarty*
Jeffrey Miller, *Ginsberg Gluzman Fage & Levitz LLP*
Don Scott, *Welch & Company LLP*
Ken Tammadge, *Collins Barrow Ottawa LLP*

Financial Planners Advisors Circle

Chair: Michael Mott, *Retirement, Estate & Investment Planning*
Mardi Collins, *Investment Planning Council of Canada*
Roberta Goldmaker, *CS Coop Community Financial Services*
Jocelyn MacKenzie, *Money Concepts*
Robert MacKenzie, *Professional Investments Inc.*
Mary Ellen Morris, *BDO Dunwoody LLP (Retired)*
Gary Renaud, *Dundee Securities Corporation*
Mike Rowland, *Potvin Rowland Financial Services*

Insurance Advisors Circle

Chair: Garry Stearns, *Clarica Financial Services*
Fred Bowie, *Canada Retirement Information Centre*
T. David Burns, *David Burns & Associates*
Seymour P. Eisenberg, *P. B. Fraser & Associates*
Ken Guarisco, *Carleton Financial Services*
James Hamilton, *CAPCORP Planning Limited*
Bruce Jardine, *Independent Planning Group*
Meiz Majdoub, *Majdoub Financial Services*
Gerry Myers, *Cartier Partners Financial Services*
George Perrin, *George E. Perrin Insurance Agency Ltd.*
Bob Richer, *CAPCORP Planning Limited*
P.J. Robertson, *Sponsor Direct*
Art Salter, *Clarica Financial Services*
Dan Slattery, *Tax and Estate Planning Group*

Investment Advisors Circle

Chair: Bob Strachan, *BMO Nesbitt Burns*
John Bull, *RBC Dominion Securities Inc.*
Kevin Charlebois, *Queensway Investment Counsel Limited*
Dan Cranley, *formerly Merrill Lynch*
David Crawford, *ScotiaMcLeod*
Scott Kendall, *TD Waterhouse*
Michael Nichol, *CIBC Wood Gundy*
Roberta Pollock, *CIBC Wood Gundy*
Ian Sterling, *P.J. Doherty & Associates Co. Ltd.*

Lawyers Advisors Circle

Chair: Patricia MacCallum-Lord, *Scotia Private Client Group*
Mark Arbique, *Fortey & Arbique*
Douglas Buchmayer, *Drache, Buchmayer LLP*
Lesley Cameron, *Cameron & Rankin*
John Clarke, *QC, Bell Baker LLP*
K. Thomas Grozinger, *Royal Trust Corporation of Canada*
Thomas A. Houston, *Fraser Milner Casgrain*
Gordon J. McCay, *Low, Murchison*
Anthony P. McGlynn, *Perley-Robertson Hill & McDougall LLP*
E. Jane Murray, *Burke-Robertson, Barristers & Solicitors LLP*
Gail Nicholls, *MacDonald Affleck*
Alan Riccardi, *Royal Trust Corporation of Canada*
Paul B. St. Louis, *BMO Harris Private Banking*

ArtsSmarts Program

A national initiative of the J.W. McConnell Family Foundation, the ArtsSmarts program promotes the active participation of young people in the arts through hands-on arts integration experience. After several years of delivering the ArtsSmarts program in Ottawa, CFO transferred the program to MASC in 2003 (www.masconline.ca). The program is entering its fifth year in Ottawa. The Community Foundation extends its gratitude to the following volunteers who made this program such a success.

ArtsSmarts Steering Committee Members

Chair: Dr. Marianna McVey	Chantal Delennoy	Janet Irwin
Madeleine Aubrey	Ross Donaldson	Bev Langevin
Dr. Laurie Bizero	Robert Filion	Catherine O'Grady
Barbara Carroll	Maureen Goodspeed	Dr. Michael Wilson
Barbara Clark	E. Suzanne Halpenny (<i>former Chair</i>)	
Bryna Cohen	Jocelyn Harvey	

Board Alumni Committee

Throughout the Community Foundation's history, many busy and highly talented people have generously donated their time and expertise to serve on the Board of Governors. Many of them continue to serve beyond their terms on the Board, as members of the Community Foundation's Board Alumni Committee. They serve as ambassadors and advocates for the Community Foundation in the community and provide an independent, unbiased sounding board for feedback and advice.

Board Alumni Committee Members

Chair: Grete Hale	Jim Hamilton	Wesley Nicol
Dr. Horace Alexis	Donna Hicks	Jean Paradis
Cynthia Baxter	Dan Hermosa	Roberta Pollock
Dr. Agnes Benidickson	Donna Holtom	Gerry Prefontaine
Ian Bourne	Marc Jolicoeur	Msgr. Peter Schonenbach
André Bussière	Frank Ling	John Scott
Vince Calzonetti	Joy Maclaren	David Simmonds
Peter Doherty	Gordon J. McCay	Tony van Straubenzee
Dudley Elcock	Caroline Midgley	
E. Suzanne Halpenny	Mervin Mirsky	

Financial Scenario Planning Task Force

The Financial Scenario Planning Task Force was established to prepare and plan for the possibility of a continued decline in investment returns. Accountable to the Board of Governors, the Task Force reviewed the Community Foundation's financial situation, researched best practices and made recommendations for change with respect to fund reserves and other aspects of the Community Foundation's operations that would be affected by continuing market declines.

Financial Scenario Planning Task Force Members

Chair: Gilles Paquet

André Bussière

Gerald K. Bouey (*Deceased February 6, 2004*)

Gordon J. McCay

Maureen A. Molot

Peter C. Reid

David Simmonds

Scott A. Wilson

Spending Policy Task Force

Reporting to the Board of Governors, the Spending Policy Task Force analyzed and made recommendations for changes to the Community Foundation's spending policy.

Spending Policy Task Force Members

Chair: Scott A. Wilson

Gerald K. Bouey (*Deceased February 6, 2004*)

Gordon J. McCay

Maureen A. Molot

David Rattray

Investing in People Award

The Community Foundation's Investing in People program, begun in 1993, offers support to those who have shown imagination and leadership in addressing issues and opportunities in our community. This is proactive grantmaking. In a kind of reverse grant process, these individuals, having been identified by the Board, are invited to accept a grant from the Community Foundation, for which they will design the purposes.

In recognition of his dedicated leadership in the establishment of Ottawa's Asset Based Community Development Network (ABCD) and the Ottawa Community Loan Fund (OCLF), the Community Foundation chose George Brown, Managing Director of the OCLF, as the recipient of this award for 2003.

ABCD is a grantmaking approach that identifies and builds on the personal, social and economic assets of a community by supporting initiatives that focus on capacity building, problem-solving and promoting financial well-being for individuals and communities. Over the last few years, the Community Foundation, with the help of George Brown and other community leaders, has helped to establish the ABCD Network to identify local initiatives that support ABCD.

The OCLF is a small business loan fund which provides self-reliance loans of up to \$15,000 to individuals and groups who have viable business ideas but do not qualify for traditional financing due to a lack of assets or personal net worth. The OCLF also funds foreign-trained professionals who cannot obtain traditional funding for their accreditation training.

The OCLF plays an important role in supporting small business owners to develop personal assets and a positive credit history. By providing access to capital, the OCLF also ensures that its borrowers can become active participants in the traditional banking system. Contrary to traditional lenders, the OCLF measures part of its success by the number of borrowers who repay their loans in a timely fashion and then become eligible for the full array of business and personal banking services offered by the chartered banks and credit unions.



Ottawa Citizen

George Brown

When Tim Bellamy's bank refused him the \$7,000 loan he needed to buy a truck to get his lawn care and snow removal business started, he turned to a finance company. He got the money, but at a drastically high price – nearly 32 per cent interest and he had to put up his used truck as collateral. Since he found out about the OCLF, things have improved greatly. Now, Tim is looking forward to getting a second truck for his growing business, using his improved credit profile to get conventional financing. He credits the OCLF for helping him regain his financial footing.

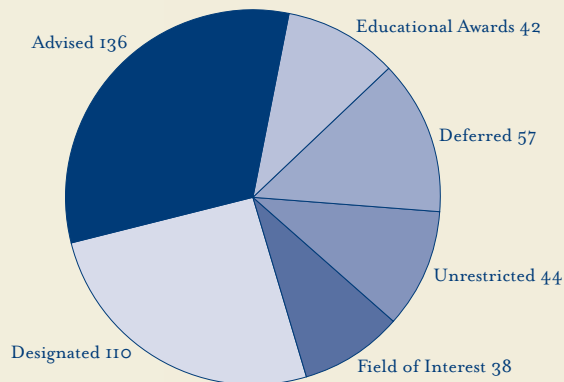
Another OCLF borrower, a young entrepreneur, had an idea and a business plan to start her own will and estate planning business. She had completed her formal education but with no assets or credit history, she was not able to get a loan through the bank. Upon discovering the OCLF on-line, she arranged a meeting, completed the loan application and was approved within a few weeks. She was then able to purchase the software she needed to begin her business. She is now a successful, independent business woman. She speaks very highly of her experience with the OCLF and feels that the Fund is a real benefit to young people like herself who are hoping to start their own business.

George Brown's role as Managing Director of the OCLF is to secure funding, ongoing volunteer support and community involvement, to promote the OCLF to lenders and borrowers and to oversee the efficient management of the Fund. Since July 2000, the OCLF has disbursed approximately \$280,564 in small business/self reliance loans to 48 Ottawa area businesses and foreign-trained professionals seeking accreditation. With demand building and a loan payment rate of 93%, the OCLF hopes to advance and accelerate its services to continue to fill the financing gap for Ottawa entrepreneurs and meet the needs of small business owners.

Funds

Thanks to the generosity of all of our donors, coupled with sound financial management, the total value of the 427 funds held at the Community Foundation of Ottawa reached \$70 million in 2003.

Funds can be unrestricted, donor advised, designated to specific charities, designated to a field of interest or to provide educational awards. The pie chart shows the number of endowed funds of each type.



The following is a list of all the funds currently held at the Community Foundation of Ottawa. New funds established in 2003 are listed in bold.

Several anonymous funds

Gunther and Inge Abrahamson Fund (*Advised*)

Adam and Rachel Fund (*Advised*)

Laura and Harris Arbiq Memorial Fund (*Advised*)

Arbour Youth Environmental Fund (*Advised*)

Arnold Fund (*Field of Interest*)

Elisabeth Arnold Plant Pool Fund (*Advised*)

ArtsSmarts (*Advised*)

Ernest W. Assaly Family Fund (*Advised*)

Fund for Athletes with Disabilities (*Designated*)

Auerbach Family Fund (*Advised*)

Baldwin Fund (*Deferred*)

Herbert and Evelyn Balls Fund (*Designated*)

Mary and Leslie Barnes Family Fund (*Advised*)

Nick Battersby Memorial Fund (*Educational Award*)

Nancy Bean Memorial Fund (*Advised*)

Beattie Fund (*Field of Interest*)

Bell Homestead Trust Fund (*Designated*)

Belvedere Fund (*Advised*)

Benidickson Family Fund (*Unrestricted*)

Bereaved Families Fund (*Designated*)

Mary Berthe Fund (*Designated*)

Beth Bertram Fund (*Unrestricted*)

Beyrouti Family Foundation (*Advised*)

Black Canadian Scholarship Fund (*Educational Award*),
including:

Dr. Lorris Elliot Memorial Fund

Charles Frazier Scholarship Fund

Brian Bockstael Fund (*Deferred*)

Carolyn Bohm Fund (*Deferred*)

Clive and Charlotte Booth Fund (*Deferred*)

Gerald and Ann Bouey Family Fund (*Unrestricted*)

Ian and Heather Bourne Family Fund (*Advised*)

Bradley and Widyaratne Family Fund (*Advised*)

J. Michael Braid Fund for Cancer (*Advised*)

Sybil Anne Brake Fund (*Deferred*)

Ann Bridgen Memorial Fund (*Advised*)

Margaret A. Broad Fund (*Advised*)

Brockville Community Foundation (*Designated*)

Brodhead Fund (*Advised*)

Jacqueline Brougham Memorial Fund (*Advised*)

Edward J. Brower Fund (*Field of Interest*)

Bruce House Endowment Fund (*Designated*),
including:

Jonathan Derek Welsh Fund

John Bull Family Fund (*Advised*)

Ned and Hazel Burgess Fund (*Unrestricted*)

P. and M. Cahill Fund (*Deferred*)

Elinore and Vince Calzonetti Fund (*Field of Interest*)

Karen and Douglas Cameron Fund (*Designated*)

Canada Trust Fund (*Unrestricted*)

Canada-U.S. Fulbright Scholarship Fund
(*Educational Award*)

Canadian Guide Dogs for the Blind Fund
(*Designated*)

Canterbury Stars Return Fund (*Designated*)

Canyon Foundation (*Advised*)

Capital Style Magazine Angel Foundation (*Advised*)

Carleton University Students' Charity Ball Fund
(*Advised*)

Carlingwood-Frank Ryan Junior Division
Scholarship Fund (*Educational Award*)

CBC Radio Classical Encounters Fund (*Advised*)

CFO Youth Education Awards (*Advised*)

Delanor Channer Foundation (*Advised*)

Cistel Foundation (*Advised*)

Citizen Advocacy Endowment Fund (*Designated*)

Barbara Clark Fund (*Advised*)

Peter and Pat Clark Family Fund (*Unrestricted*)

Ruth M. and G. Vincent Clark Family Fund
(*Designated*)

Kay Clarke Fund (*Deferred*)

Neta F. Clarke Fund (*Unrestricted*)

Sylvain Cloutier Memorial Fund for Literacy
(*Field of Interest*)

Andy Cohen Memorial Fund (*Advised*)

Community Arts Fund (*Field of Interest*), including:
Doris M. Smith Fund

Community Foundation of Ottawa Operating
Endowment Fund (*Designated*), including:

Herbert Ryan Balls Founder's Fund

Jim and Jane Hamilton Fund

John L. Kelly Fund

Norman Lea Fund

Maureen and Henry Molot Fund

Joyce Conger Fund for the Arts (*Advised*)

David Conn Memorial Fund (*Advised*)

George Joseph Cooper Fund (*Deferred*)

Corel Endowment Fund for the Arts (*Designated*)

Paul E. K. and Suzanne Cornforth Fund (*Advised*)

Coughlin and Associates Ltd. (*Unrestricted*)

Council on Aging Endowment Fund (*Designated*)

Country '92 Cares Foundation (*Advised*)

Iris Craig Fund (*Deferred*)

Ann F. Crain Fund (*Advised*)

John Crow Fund (*Unrestricted*)

CS Co-Op Community Fund (*Advised*)

Shirley Cummings Fund (*Advised*)

Norman Dahl - George Wilkes Fund (*Advised*)

Barbara and Everett Danby Fund (*Deferred*)

Dominic D'Arcy Talent Development Fund
(*Advised*)

E. Ruth Davidson Fund (*Advised*)

Betty Davison Fund (*Designated*)

Adelle and Paul Deacon Acacia Fund (*Advised*)

Janette Fleming Dean Memorial Fund
(*Educational Award*)

Paul Desjardins Memorial Fund (*Advised*)

Lauren Di Ianni Memorial Fund (*Educational Award*)

Ann Diamond Fund (*Advised*)

Peter and Morleen Doherty Fund (*Advised*)

Dowler/Kellam Fund (*Unrestricted*)

J. Andrew Doyle Fund (*Advised*)

Donna and Gary DuBreuil Wildlife Fund (*Deferred*)

James Eades Memorial Fund (*Advised*)

Helen and Arnold Earl Fund (*Advised*)

eatsleepmusic.com Fund (*Advised*), including:

Donor A of eatsleepmusic.com Fund

Donor B of eatsleepmusic.com Fund

Donor C of eatsleepmusic.com Fund

Donor D of eatsleepmusic.com Fund

Donor E of eatsleepmusic.com Fund

John Elliott Memorial Fund (*Advised*)

Elmwood School Endowment Fund (*Designated*)

Elmwood School Scholarship Fund (*Educational
Award*), including:

Gisele Campeau Scholarship Fund

Norma Davies Scholarship Fund

Paul Deacon Memorial Scholarship Fund

Milena Sigmund Scholarship Fund

Cairine Wilson Memorial Scholarship Fund

General Scholarship Fund

Mac Ervin Fund (*Designated*)
Esperanza Fund (*Advised*)
Family Service Canada Endowment Fund
(*Designated*)
Family Service Centre of Ottawa-Carleton
Endowment Fund (*Designated*)
Norm Fenn Fund (*Educational Award*)
James Robin Findlay Fund (*Field of Interest*)
Fred and Gwen Finlay Fund (*Unrestricted*)
O. J. Firestone Endowment Fund (*Designated*)
O. J. Firestone Memorial Fund (*Designated*)
E. Richard Fisher Fund (*Deferred*)
Sidney Fisher-David Brault Fund for Animal
Welfare (*Deferred*)
Thomas G. Flanagan Award Fund
(*Educational Award*)
Forbes Family Memorial Fund (*Designated*)
Foundation for the Homeless (*Field of Interest*)
Frangipani Fund (*Advised*)
Douglas Frosst and Lori Gadzala Fund (*Unrestricted*)
Fund for a New Generation (*Advised*)
Funds for Children (*Field of Interest*)
Gaia Fund (*Advised*)
John Galbraith Fund (*Unrestricted*)
Gamble St. Pierre Fund (*Advised*)
Margaret and Alastair Gamble Family Fund
(*Unrestricted*), including:
Alastair Gamble Memorial Fund
Elaine Garfinkel's Fund for Children
(*Field of Interest*)
Jenny Gilbertson Memorial Fund (*Advised*)
Glebe Centre Endowment Fund (*Designated*),
including:
Abbotsford Seniors' Centre Fund
Sue Leconte Music Therapy Fund
McGarry Family Fund
Gowlings Fund (*Unrestricted*), including:
David Simmonds Fund
Catherine W. Graham Fund (*Unrestricted*)
Green Fund (*Field of Interest*)
Irving Greenberg Memorial Camp Fund (*Designated*)
Shirley Greenberg Family Fund (*Advised*)
Tom Green's Nuts Cancer Fund (*Field of Interest*)
Jerry Grey Fund (*Deferred*)

Donald J. Griffin Memorial Fund (*Unrestricted*)
Michael Joseph Griffin Foundation (*Advised*)
Grossman/Klein Fund (*Unrestricted*)
Grossmann-Hensel Fund (*Advised*)
Ken Guarisco Fund (*Deferred*)
Joan Gullen Fund (*Advised*)
Lawrence (Larry) S. Hagen Memorial Fund
(*Educational Award*)
E. Suzanne Halpenny Fund (*Advised*)
Wayne and Donna Harper Animal Welfare Fund
(*Deferred*)
Anthony (Tony) Harrison Memorial Fund (*Advised*)
Howard A. and Jane B. Hart Fund (*Designated*)
Ellen Elizabeth Heath Fund (*Educational Award*)
Gordon and Joan Henderson Family Funds
(*Designated*), including:
Gordon and Joan Henderson Family
Fund - Community Foundation
of Ottawa
Gordon F. Henderson Fund for
law students who require financial
assistance
Gordon F. Henderson Memorial
Fund for unrestricted purposes
Hill Charity Fund (*Advised*)
Margaret E. Hill Fund (*Designated*)
Mary Vincent Hill Memorial Fund (*Advised*)
Edna I. Joynt Hines Memorial Fund (*Advised*)
Diane Holmes Fund (*Advised*)
Jacquelin Holzman Fund for Youth (*Advised*)
Hopewell Fund (*Advised*)
Hospice at May Court Fund (*Designated*),
including:
Paul Aucoin Memorial Fund
Dowler/Kellam Fund
Joy and Dick Hudson Fund (*Designated*)
Humane Society of Ottawa Fund (*Designated*)
Wilburt Hunter Memorial Fund (*Advised*)
Hynna Family Fund (*Unrestricted*)
IABC Ottawa AIPC Fund (*Advised*)
Barbara Ingram Memorial Fund (*Designated*)
Barbara Ingram, Janet W. McCarthy, and
W. J. P. Robertson Memorial Scholarship
(*Educational Award*)

Institute of Health Fund *(Advised)*
Inuit Art Foundation Endowment Fund *(Designated)*
80th Anniversary Municipal Chapter of Ottawa
IODE Education Award *(Educational Award)*
IODE Lord Dundonald Chapter
(Educational Award)
IODE Lorraine Chapter Fund *(Educational Award)*
IODE Memorial Silver Cross Chapter
(Educational Award)
Susan Jermyn Award Fund *(Advised)*
Jesus' Awesome Work Fund *(Advised)*
Douglas C. Johnston, Elizabeth Donlan Family
Fund *(Deferred)*
Lois M. Johnston Fund *(Unrestricted)*
Norma P. Johnston Fund *(Deferred)*
Alec and Kathleen Jones Foundation
(Educational Award)
Joshua Fund *(Field of Interest)*
Emile Jurgens Family Fund *(Advised)*
Erdelyi Karpati Memorial Fund *(Designated)*
Katsura Community Fund *(Advised)*
Stanislaw Kawczak Family Fund *(Advised)*
Keith Kelly Award for Cultural Leadership
(Designated)
William H. and Nora Hickson Kelly Fund *(Advised)*
William T. Kennedy Fund *(Deferred)*
James P. Kenney Fund *(Field of Interest)*
Kildonan Education Fund *(Educational Award)*
King Foundation *(Advised)*
Kelvin Kirk Legacy Foundation *(Advised)*
Kiwanis Club of Ottawa Legacy Fund *(Designated)*
Valerie Knowles Animal Welfare Fund *(Advised)*
William and Olga Kowal Fund *(Deferred)*
Krstic Cavanagh Cultural Fund for Youth *(Advised)*
Labarge Family Fund *(Advised)*
Lambda Fund for Excellence *(Educational Award)*
Donald H. Lander Scholarship Fund
(Educational Award)
Donald and Dolores Langill Fund *(Field of Interest)*
Rose-Marie and Bernard Langill Fund *(Unrestricted)*
Szent Laszlo Scholarship Fund *(Designated)*
Laughing Eagle Fund *(Deferred)*
Peter Laverdière Fund *(Designated)*
Mary and John Lay Fund *(Deferred)*

Trudi Lecaine Fund *(Designated)*
Johanne Lepine Foundation *(Advised)*
Hildy and Steven Lesh Family Fund *(Advised)*
David and Joyce Loeb Fund *(Unrestricted)*
Fran Lowe Memorial Fund *(Advised)*
David Luck and Maurice Roy Fund *(Deferred)*
Bryan Lumsden Scholarship Fund
(Educational Award)
Mary Louise Lynch Fund *(Field of Interest)*
Angie MacDonald and Brettel Dawson Fund
(Deferred)
Macdonald Club Fund *(Educational Award)*
Mary E. Macdonald Fund *(Deferred)*
Fraser MacDougall Journalism Prize Fund
(Educational Award)
**MacKenzie Fund in Support of Christian
Hunger Relief Ministries** *(Advised)*
Dr. Lorne E. MacLachlan Fund *(Field of Interest)*
Patricia R. MacLaren Fund *(Designated)*
Myrtle Maloney Fund *(Field of Interest)*
Ted Marshall Memorial Fund *(Advised)*
Ian David Martin Memorial Fund *(Field of Interest)*
Roy and Rosemary Matthews Fund *(Deferred)*
Grace Maynard Fund *(Unrestricted)*
Leanora D. McCarney Fund *(Unrestricted)*
McCay Family Fund *(Unrestricted)*
J. F. (Jack) McCracken Fund *(Advised)*
Dr. Rebecca McDermot Fund *(Deferred)*
McFarlane Family Fund for Alzheimer Disease
(Field of Interest)
Peter McGregor Memorial Fund *(Advised)*
McGregor-Sinclair Ecology and Peace Fund
(Advised)
Barbara and Glenn McInnes Family Fund
(Unrestricted)
Alan and Nora McLaurin Fund *(Field of Interest)*
Stephen E. McLoughlin Memorial Foundation
(Advised)
Dr. Marianna McVey Fund for Graduate Study
and Research *(Educational Award)*
Jack Meadows Memorial Fund *(Educational Award)*
Joyce Melville Memorial Award *(Educational Award)*
Mercy and Healing Fund *(Deferred)*

Michener Awards Foundation (*Designated*), including:

Paul Deacon Memorial Fund
William MacPherson Memorial Fund

James A. Millar Family Fund (*Deferred*)
Alistair and Toni Miller Fund (*Deferred*)
Dr. Brian Mills Awards Fund (*Educational Award*)
Minto Foundation Community Fund (*Advised*)
Mervin Mirsky Family Fund (*Advised*)
Jean and McKillop Mooney Fund (*Deferred*)
Margaret and Cecil Morrison Memorial Fund (*Unrestricted*)

Alex Munter Charitable Foundation (*Advised*)
Reg and Nancy Naish Fund (*Deferred*)

Nation-Turner Fund (*Deferred*)
Nelms Family Fund (*Unrestricted*)
Doris Neville Fund (*Field of Interest*)

New Sun Fund (*Advised*)
John H. Nichol Family Fund (*Educational Award*)
Michael J. and Heide B. Nichol Family Fund (*Deferred*)

Eleanor Nickerson Fund (*Unrestricted*)
Wesley and Mary Nicol Family Fund (*Advised*)
Nolo Illegitimi Carborundum Fund (*Advised*)

North Grenville Community Foundation (*Designated*), including:
North Grenville Family Focus Fund

Bernice Oak Memorial Fund for Music Education (*Advised*)

Ruth and Harold Oatway Family Fund (*Designated*)

Charles O'Connor Memorial Fund (*Educational Award*)

Joe O'Donnell Memorial Fund (*Designated*)
Thomas J. O'Keefe Memorial Fund (*Field of Interest*)

Ontario Endowment for Children and Youth (*Field of Interest*), including:

Adizes Fund
Gaston Heon Fund

Nicole Ool Memorial Fund (*Designated*)
Opportunities Fund (*Advised*)
Elizabeth Orton and Michael Cox Fund (*Advised*)
Raymond J. Ostiguy Fund (*Field of Interest*)

Ottawa Art Gallery Acquisitions Endowment Fund (*Designated*), including:

Mayo Graham Art Acquisitions Fund
Mary O'Neil Art-That-Works Fund

Ottawa Art Gallery Operating Fund (*Designated*)
Ottawa Association for the Blind Fund (*Field of Interest*), including:

Irwin Haskett Fund

Ottawa Children's Treatment Centre Foundation Endowment Fund (*Designated*)
Ottawa Citizen Literacy Foundation (*Advised*)

Ottawa Public Library Endowment Fund (*Designated*), including:

Vivien Bennet Memorial Fund
Andrea Mein Memorial Fund
Ottawa Public Library Acquisitions in Non-Fiction Fund
Ottawa Public Library Fiction Fund

Ottawa-Carleton District School Board Foundation (*Designated*), including:

Bob and Bonnie Dagenais Memorial Fund
Earl of March Secondary School Fund
Glebe Collegiate Fund

Craig Hadwen Memorial Scholarship Fund
Charlotte Lemieux Memorial Fund
Lisgar Collegiate Fund

Ottawa Technical Learning Centre Fund

Françoise and Charles-Eugène Ouellet Family Fund (*Designated*)

Ödön and Yvonne Panek Family Fund (*Advised*)
Jean C. Paradis Family Fund (*Field of Interest*)

Jean-Guy Paré and Nicole Demers Fund (*Deferred*)

David Mackenzie Parry Memorial Fund (*Designated*)

Ann Louise Pearson Fund (*Field of Interest*)
Svend Pedersen Fund (*Unrestricted*)

Perley and Rideau Veterans' Health Centre Foundation (*Designated*)

Diane Perry Scholarship Fund (*Designated*)
Phi Kappa Pi Fund (*Advised*)

Phoenix Fund (*Deferred*)

Planned Parenthood Federation of Canada (*Designated*), including:

Phyllis Harris Scholarship Endowment
Roberta and Sidney Pollock Fund (*Unrestricted*)

Puran Shanti Education Fund (*Advised*)
Marjorie A. Purvis Fund (*Designated*)
QUAIL Endowment Fund (*Designated*)
Dalton and Jacquie Quig A.L.S. Memorial Fund
(*Designated*)
Kim Rabot Memorial Fund (*Educational Award*)
Radio Amateurs of Canada Foundation (*Advised*)
Rainbow Fund (*Advised*)
Ray & Berndtson/Robertson Surrette Fund
(*Unrestricted*)
G. Edward and Mary-Anne Reed Fund (*Deferred*)
Peter and Pat Reid Family Fund (*Advised*)
George Rejhon Fund (*Deferred*)
Relief of Hunger and Poverty Fund (*Deferred*)
Nora Green Rickwood Memorial Life Long
Learning Fund (*Designated*)
Derek Alan Robinson Fund (*Advised*)
Rotary Youth Assistance Fund (*Advised*)
Roundell Family Fund (*Advised*)
Mrs. Janet and T. L. Roy Fund (*Advised*)
Ken and Debbie Rubin Public Interest Advocacy
Fund (*Advised*)
Kris Sarin Scholarship Fund (*Deferred*)
Helen Scafe Fund (*Advised*)
Schizophrenia Foundation (*Field of Interest*),
including:
John and Jean Doherty Fund
Monsignor Peter Schonenbach Fund (*Unrestricted*)
David Mahood Scott Fund (*Designated*)
Duncan Campbell Scott Fund (*Designated*)
John M. Scott Fund (*Unrestricted*)
Seaton Fund (*Designated*)
**Ségard-Hutchison Family Fund for Animal
Welfare** (*Field of Interest*)
Sephira Fund (*Advised*)
Drew Shouldice Memorial Fund (*Educational Award*)
Mary Lou Oblender Siemonsen Memorial Fund
(*Designated*)
Agnes Simpson Founders Fund (*Designated*)
Sirotek Family Fund (*Unrestricted*)
Smiley Face Fund (*Advised*)
Dave Smith Foundation for Youth (*Advised*)
Anne and Raymond Snipper Fund (*Field of Interest*)

Jon D. Snipper Fund (*Deferred*)
Social Planning Council of Ottawa Fund
(*Designated*)
Ruth and Hyman Soloway Fund (*Unrestricted*)
Somers Family Fund (*Deferred*)
SOS-Children's Villages Canada Education
Fund (*Designated*)
SOS-Children's Villages Canada Operating
Endowment Fund (*Designated*)
Ralph and Betty Sparham Fund (*Unrestricted*)
Irene Spry Memorial Fund (*Advised*)
St. Andrew's Fund (*Advised*)
St. Louis Family Fund (*Deferred*)
St. Mary's Home Endowment Fund (*Designated*)
Jean-Claude and Elsa St. Pierre Fund (*Deferred*)
Jeanne Stark-Slyfield Fund (*Deferred*)
Stead Family Fund (*Unrestricted*)
Garry and Gabriele Stearns Family Fund (*Deferred*)
Dick Stewart Fund for People (*Advised*)
Barbara Lesley Sudall Fund (*Deferred*)
Sally Swenson Fund (*Unrestricted*)
Dorothy and Edwin Swimmings Fund (*Deferred*)
C. Clifford Taggart Fund (*Advised*)
Taggart Family Fund (*Advised*)
Marion and Norman Takeuchi Fund (*Deferred*)
Barbara Taylor Fund (*Deferred*)
Patricia L. and Douglas Timms Fund (*Deferred*)
F. Brian Toller Fund (*Advised*)
Ross and Hélène Tolmie Family Fund (*Unrestricted*)
Margaret and Kenneth Torrance Family Fund
(*Advised*)
Dennis Tourbin Fund for Emerging Artists
(*Advised*)
Uthhoff Family Fund (*Advised*)
Maximilian Ullyett and Fleurette Ullyett Fund
(*Deferred*)
United Way Legacy Fund for Social Services
(*Designated*)
United Way Legacy Operating Endowment Fund
(*Designated*)
Bhayabhai and Urmila Valia Family Charitable
Endowment Fund (*Advised*)
Van Iterson Family Fund (*Advised*)

Lucien and Beatrice Van Walleghem Scholarship
Fund (*Educational Award*)

Coby Vanzyl Memorial Fund (*Field of Interest*)

Fonds Marc et Joanne Villemaire (*Advised*)

Fonds Robert W. Waddell (*Advised*)

Lloyd Wade Family Fund (*Advised*)

Kathryn Wake Fund (*Designated*)

Douglas and Sheila Waugh Fund (*Designated*)

Roger Webber-Taylor Fund (*Advised*)

Westeinde Family Fund (*Unrestricted*)

George and Delphin White Family Fund
(*Deferred*)

R. B. Whyte Fund (*Advised*)

Elizabeth Wiebe Fund (*Deferred*)

Lloyd and Vivian Willows Fund (*Designated*)

Cairine Wilson Memorial Fund (*Field of Interest*)

Ronald and Marlene Wilson Fund (*Designated*)

Scott and Mary Ellin Wilson Family Fund
(*Advised*)

Sandi Winter Fund (*Deferred*)

Women's Business Network Scholarship Fund
(*Educational Award*)

World Exchange Plaza Arts Endowment Fund
(*Advised*)

Youville Centre Endowment Fund (*Designated*),
including:

Hartin House Sub-Fund for Graduation

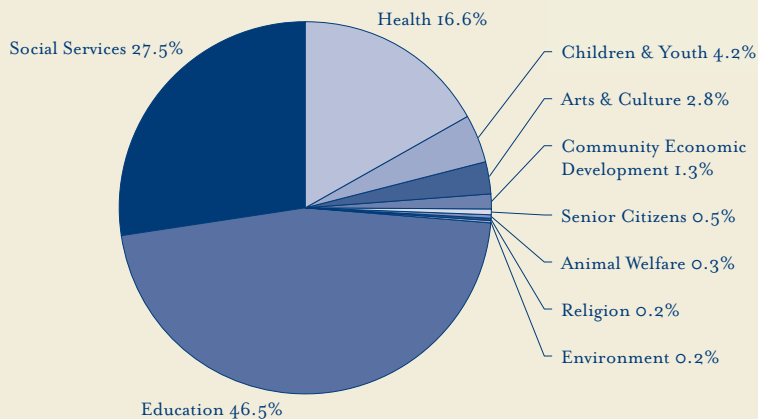
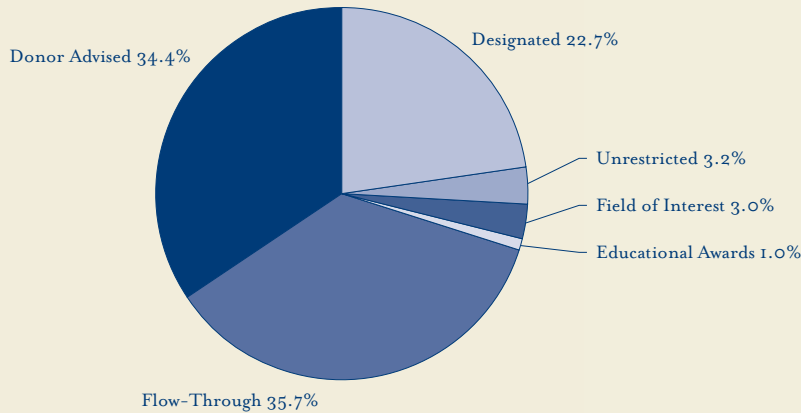
James Zagon Memorial Scholarship
(*Educational Award*)

Ruby and Robert Zimmerman Family Fund
(*Designated*)

Zonta Club of Ottawa Fund (*Designated*)

2003 Grants

Grants are made to charitable organizations in support of a broad variety of initiatives from health, education, community economic development and social services to the environment, animal welfare, arts and culture. The Community Foundation distributed a record \$5.7 million in grants to charitable organizations in 2003. The following pie charts show the distribution of grants dollars by sector and fund type, respectively.



The following is a list of the grants made by the Community Foundation of Ottawa in 2003. A brief description is provided for those grants that resulted from our Community Grants or Strategic Impact Grants application process. For those entries without such a description, the grant was either made on the advice of a donor or it was income paid to an organization whose endowment is managed by the Community Foundation.

A Company of Fools To present Shakespeare's "Much Ado About Nothing" at Strathcona Park and other Ottawa City Parks in the summer	\$1,800	L'APE de l'école St-Hugues ArtsSmarts Program	\$50
A.Y. Jackson Secondary School Organizational endowment income	\$19,400	Aphasia Centre of Ottawa To develop resources to support access to social and therapeutic computer activities for people with Aphasia	\$5,000
Aboriginal Women's Support Centre • To provide emergency funding to support homeless aboriginal women and children • Grant on the advice of a donor	\$7,682 \$1,650 \$6,032	L'Arche Ottawa Inc. To assist seniors with disabilities prepare themselves for the final phase of their lives	\$5,000
Acadia Divinity College Grant on the advice of a donor	\$300	The Arthritis Society Three grants on the advice of donors	\$2,374
Action-Logement, région d'Ottawa-Carleton Inc. Grant on the advice of a donor	\$1,000	Association for Cultural and Educational Development Funding for a four-week academic/sports mentoring program designed to help boys aged 11-13 from under-privileged families to be successful in school and in society	\$6,000
Adventures in Engineering and Science To provide a student-based program which promotes a positive learning experience for all children	\$5,000	Banff Avenue Tenants Association • To provide enhanced educational support at the homework club to children and youth at risk • Grant on the advice of a donor	\$6,500 \$6,000 \$500
Afghanistan Relief International Aid Network Services To fund a summer school "Two Traditions, One Culture" for 75 Afghan-Canadian children ages 6-15, to increase their awareness of the history and culture of Afghanistan and of Canada, and to improve their practical life skills	\$7,500	The Banff Centre Grant on the advice of a donor	\$200
The AIDS Committee of Ottawa To provide long term survivors of HIV/AIDS a series of group interventions and retreat workshops that will support them in dealing with their loss	\$5,500	BARK - Bytown Association for Rescued Kanines To cover the cost of veterinary bills, covering spay/neuter expenses for rescued dogs in the Ottawa region	\$5,000
Algonquin College Ten educational awards on the advice of donors	\$10,540	The Battlefords Interval House Society Grant on the advice of a donor	\$1,000
ALS Society of Ontario Grant on the advice of a donor	\$328	Bell High School Organizational endowment income	\$6,104
Alta Vista Public School Grant on the advice of a donor	\$230	Beth Medrash Govoha Grant on the advice of a donor	\$1,500,000
Alzheimer Society of Canada Grant on the advice of a donor	\$500	Big Sisters Big Brothers of Ottawa • To work with a variety of multicultural communities to make BSBBO's programs and services available to more children and youth • Two grants on the advice of donors	\$5,970 \$5,000 \$970
Alzheimer Society of Ottawa-Carleton Four grants on the advice of donors	\$7,311	Blair Court Community House To offer a sewing program for the women of Blair Court Community House, as a social and educational opportunity	\$2,000



Blossom Park Public School	\$100	Canadian Guide Dogs for the Blind	\$6,192
Organizational endowment income		• Three grants on the advice of donors	\$3,731
Boys and Girls Club of Ottawa	\$22,800	• Organizational endowment income	\$2,461
Two grants on the advice of donors		The Canadian Jesuits International	\$200
Breast Cancer Society of Canada	\$3,428	Educational award on the advice of a donor	
Grant on the advice of a donor		Canadian Mental Health Association Ottawa Branch	\$100
Broken English Theatre Company	\$2,000	Grant on the advice of a donor	
To present readings of several plays focusing on difficult issues facing minority cultures		The Canadian National Institute for the Blind	\$3,426
Brookfield High School	\$1,800	Two grants on the advice of donors	
Organizational endowment income		Canadian Office of Human Rights	\$5,000
Bruce House	\$6,316	To fund a training program that will strengthen a summer youth employment project for youth living in co-op housing	
• To enable Bruce House to support clients living independently through a greater use of volunteers	\$5,800	Canadian Organic Growers Association	\$500
• Grant on the advice of a donor	\$277	Grant on the advice of a donor	
• Organizational endowment income	\$239	Canadian Parks and Wilderness Society	\$3,000
Cairine Wilson Secondary School	\$1,200	To establish an online retail operation that will focus on goods that promote their mission and values, and provide a sustainable earned revenue stream	
Organizational endowment income		Canadore College of Applied Arts and Technology	\$5,000
Caldwell Family Centre	\$3,960	Two educational awards on the advice of donors	
To continue to offer English classes to the senior members who need basic language skills in order to function in Canada		Candlelighters' Childhood Cancer Trust	\$5,050
Canadian Aid for Chernobyl	\$500	To produce a bilingual newsletter of its programs and services for families of children with cancer, and other interested parties	
Grant on the advice of a donor		Canterbury High School	\$1,300
Canadian Cancer Society	\$4,856	Organizational endowment income	
Grant on the advice of a donor		Carleton University	\$208,941
Canadian Catholic Organization for Development & Peace	\$500	Fourteen grants, including educational awards, academic chairs and other grants	
Grant on the advice of a donor		Carlington Community and Health Services	\$6,500
Canadian Centre for Policy Alternatives	\$246	Grant on the advice of a donor	
Grant on the advice of a donor		Castor Valley ES/Osgoode Care Centre	\$50
Canadian Conference for the Arts	\$2,021	ArtsSmarts Program	
• Grant on the advice of a donor	\$321		
• ArtsSmarts Program	\$1,700		
Canadian Council of the Blind - Ottawa Chapter	\$2,600		
Grant on the advice of a donor			
Canadian Diabetes Association	\$24,379		
• To cover the cost of sending three children with type I diabetes to Camp Banting for a two-week period	\$3,300		
• Two grants on the advice of donors	\$21,079		

Catholic Immigration Centre Foundation \$10,000
To involve members of the multicultural community in identifying and addressing their concerns related to community safety, crime prevention and community policing

Causeway Work Centre Inc. \$150
Grant on the advice of a donor

Celia Franca Foundation \$1,500
Grant on the advice of a donor

The Central Children's Choir of Ottawa-Carleton \$1,564
Three grants on the advice of donors

Centre hospitalier de la pieta \$768
Grant on the advice of a donor

Centre Youville Centre Ottawa-Carleton Inc. \$6,079
• Three grants on the advice of donors \$3,153
• Organizational endowment income \$2,926

Children at Risk, Ottawa \$5,000
To support additional social skill therapy groups for autistic children

CHEO Foundation \$5,208
Four grants on the advice of donors

Children's Village of Ottawa-Carleton \$2,270
To support a pilot program - Parents as Teachers, an early childhood outreach program, designed to enhance child development and literacy through parent education and support

The Children's Welcome Centre \$3,000
To offer affordable recreational programs to children and parenting courses to the parents

Christian Hit Radio Inc. (CHRI) \$244
Grant on the advice of a donor

Christie Lake Kids \$51,569
• To provide special activities to 384 children from economically disadvantaged families \$4,954
• To fund 24 Junior staff to learn leadership skills \$1,954
• To ensure ten children could attend camp, to sponsor the swimming program at camp and to support 3 educational awards \$25,804
• To provide summer recreational camp and skill development programs to 10 economically disadvantaged children \$1,954

• To provide the "Leadership in Training" (LIT) Program to youth from economically disadvantaged families \$1,954

• To replace waterfront equipment and repair canoes to ensure the safety of campers \$1,954

• To provide an arts program to 384 children from economically disadvantaged families \$1,954

• To provide outdoor living experience to youth from economically disadvantaged families to help develop leadership skills and self-confidence \$1,954

• Three grants on the advice of donors \$9,087

Christmas Exchange of Ottawa-Carleton \$4,856
Grant on the advice of a donor

Circle Square Ranch Inc. \$750
Grant on the advice of a donor

La Cité collégiale \$700
Educational award on the advice of a donor

Citizen Advocacy of Ottawa-Carleton \$67
Organizational endowment income

City of Ottawa \$6,000
Grant on the advice of a donor

Cobourg District Collegiate Institute East \$1,243
Two educational awards on the advice of donors

Community Economic Development (CED) Network \$10,000
To support a conference on Asset Based Community Development (ABCD)

Community Foundation of Ottawa \$1,125
Three grants on the advice of donors

Community Foundations of Canada \$7,793
To support and develop the national network of community foundations

Compagnie Vox Théâtre \$1,000
To present "Histoire du soldat", a piece by Igor Stravinsky to children six years and older

The Compassionate Friends - Ottawa Valley/Outaouais \$1,030
Grant on the advice of a donor

Concordia University \$1,008
Educational award on the advice of a donor

Connaught Public School \$3,300
Two grants on the advice of donors

Convent Glen Elementary School \$50
Organizational endowment income

Cookstown United Church \$705
Grant on the advice of a donor

Coopérative AMI JEUNESSE \$5,500
To purchase 300 dictionaries and
Bescherelles for children and youth
of disadvantaged families

The Council on Aging \$372
Organizational endowment income

Council for the Arts in Ottawa \$2,118
Grant on the advice of a donor

Covenant House Toronto \$200
Grant on the advice of a donor

Crystal Bay Centre for
Special Education \$1,300
Grant on the advice of a donor

Cumberland Township Community
Resource Centre \$250
Grant on the advice of a donor

CUSO \$1,200
Grant on the advice of a donor

D. Roy Kennedy Public School \$30
Organizational endowment income

Dalhousie University \$2,000
Grant on the advice of a donor

Dave Smith Youth Treatment Centre \$2,182
Grant on the advice of a donor

The David Suzuki Foundation \$1,000
Grant on the advice of a donor

Debra Dynes Family House \$1,035
· To develop an IT plan and upgrade
computer memory \$835
· Grant on the advice of a donor \$200

Distress Centre of Ottawa and Region \$1,000
Grant on the advice of a donor

Dovercourt Recreation Association \$2,000
To add an accessible preschool-aged play
structure and play area to McKellar Park

Down Syndrome Association \$50,000
Seed funding for H'Art of Ottawa, a
curriculum-based entrepreneurial program
for people with developmental challenges

Dunning-Foubert Elementary School \$4,500
To support a "Kids Understanding Kids
Cultural Program" involving the exchange
of students and staff between an inner city
school and a suburban school

Dying with Dignity \$500
Grant on the advice of a donor

E.A.G.L.E Centre Inc. \$10,000
To assist youth in preparing for, obtaining
and maintaining employment, and in making
a successful transition into the labour market

Earl of March Secondary School \$2,300
Organizational endowment income

Eastern Ontario Drama \$2,000
League Foundation
Grant on the advice of a donor

École élémentaire catholique \$250
de la découverte
Grant on the advice of a donor

Elgin Street Public School \$50
Organizational endowment income

Elizabeth Fry Society of Mainland \$1,200
Nova Scotia
Grant on the advice of a donor

Elmwood School Inc. \$9,887
· Grant on the advice of a donor \$1,000
· Five educational awards on the
advice of donors \$5,654
· Organizational endowment income \$3,233

Espace Musique Concert Society \$169
Grant on the advice of a donor

Family Services Ottawa \$241
Organizational endowment income

Foster Farm Community \$2,000
Association Family House
To support a sewing program in the Foster
Farm Community, a low-income housing
neighbourhood

The Gideons International in Canada \$100
Grant on the advice of a donor

Girls, Obesity and Loving \$3,000
Support (GOALS)
To develop and support a forum where young
women and their families come to terms with
being overweight

Le Gîte Ami	\$768	The Hillel Lodge Long-Term Care Foundation	\$100,000
Grant on the advice of a donor		To provide enhanced therapeutic services at the Bess and Moe Greenberg Hillel Lodge including physiotherapy, occupational therapy, and restorative care services	
The Glebe Centre Incorporated	\$5,072	Hindu Society of Ottawa-Carleton	\$1,000
• Three grants on the advice of donors	\$1,538	Grant on the advice of a donor	
• Organizational endowment income	\$3,534	Hopewell - Eating Disorders Support Centre of Ottawa	\$2,000
Glebe Collegiate Institute	\$6,976	To support two professionally facilitated "Drop In" group sessions, one for those suffering from eating disorders and another for their families	
• Two grants on the advice of donors	\$1,500	Horn of Africa Women's Association	\$5,000
• Three educational awards on the advice of donors	\$1,076	To provide skills training for employment for women over a period of one year, through a sewing and employment information program	
• Organizational endowment income	\$4,400	The Hospice at May Court	\$21,695
Glebe St. James United Church	\$174	• To offer complementary therapies such as reflexology and massage to patients suffering from life threatening or terminal illness	\$5,000
Grant on the advice of a donor		• Eight grants on the advice of donors	\$2,927
Gloucester Emergency Food Cupboard	\$924	• Organizational endowment income	\$13,768
Grant on the advice of a donor		Housing Help	\$10,000
Gloucester High School	\$1,500	• To provide bridge financing to maintain the momentum of public awareness, research and networking projects	\$4,500
Two educational awards on the advice of donors		• To match those in need of affordable housing to space in existing homes and provide support to both parties	\$4,500
Good Day Workshop Programs Inc.	\$15,000	• Grant on the advice of a donor	\$1,000
To enhance the teaching opportunities and earning capacity of workers by providing upholstery/caning services to complement the furniture refinishing and repair programs		Interval House of Ottawa-Carleton	\$628
Le Groupe Dance Lab	\$339	Two grants on the advice of donors	
Grant on the advice of a donor		Inuit Art Foundation	\$1,689
Harmony House	\$5,000	• Grant on the advice of a donor	\$100
Grant on the advice of a donor		• Organizational endowment income	\$1,589
Harvest House Residential	\$5,000	Irving Greenberg Memorial Camp Fund	\$2,849
To fund their SUPER Program, which provides important information on substance use to youth at risk in the public school system		Grant on the advice of a donor	
Heart and Stroke Foundation of Ontario	\$2,426	iSisters Technology Mentoring Inc.	\$25,000
Grant on the advice of a donor		• To implement a new technology mentoring program for Tungasuwingat Inuit women	\$10,000
Help the Aged (Canada)	\$1,000	• To develop and implement a new group program for Big Sisters, Little Sisters using new technologies in a fun format	\$5,000
Grant on the advice of a donor		• Grant on the advice of a donor	\$10,000
Heron Road Seniors' Centre	\$150		
Grant on the advice of a donor			
Hillcrest High School	\$1,000		
Organizational endowment income			

J M J Children's Fund of Canada	\$1,000	Lisgar Collegiate Institute	\$5,976
Grant on the advice of a donor		• Educational award on the advice of a donor	\$276
J. S. Woodsworth Secondary School	\$313	• Organizational endowment income	\$5,700
Organizational endowment income		Lowertown Resource Centre	\$5,000
Jewish Family Services of Ottawa-Carleton	\$1,150	To develop and support a Community Store in Lowertown in Ottawa	
• To support an educational event for families and youth at risk and those who work with them	\$1,000	Loyalist College	\$2,500
• Grant on the advice of a donor	\$150	Educational award on the advice of a donor	
John McCrae Secondary School	\$3,000	Masaryk Memorial Institute Inc.	\$5,000
Organizational endowment income		Grant on the advice of a donor	
Junior Achievement of Ottawa-Carleton	\$15,000	McGill University	\$500
• To deliver five Junior Achievement Company Programs in Ottawa, targeting youth at risk of not completing their secondary education	\$5,000	Grant on the advice of a donor	
• Two grants on the advice of donors	\$10,000	Memorial University of Newfoundland	\$15,000
Kidney Foundation of Canada, Eastern Ontario Branch	\$5,556	Three educational awards on the advice of donors	
Two grants on the advice of donors		Michele Heights Community House	\$4,770
Kiwanis Club of Bytown	\$500	To fund a project designed to build capacity by bringing together women from the Michele Heights and Foster Farm neighbourhoods	
Grant on the advice of a donor		The Michener Awards Foundation	\$35,127
Kiwanis Club of Ottawa Foundation	\$4,711	Organizational endowment income	
• Grant on the advice of a donor	\$211	The Mission	\$4,000
• Two educational awards on the advice of donors	\$4,500	To purchase equipment and educational resources to enhance work readiness skills of clients of the program	
Kiwanis Music and Dance Festival Association - National Capital Region	\$2,500	Mount Sinai Hospital Foundation	\$475
Grant on the advice of a donor		Grant on the advice of a donor	
Lake Country Alliance Church	\$1,346	Mukul Hindi School	\$1,000
Grant on the advice of a donor		Grant on the advice of a donor	
Lambda Foundation	\$687	Mutchmor Public School	\$50
Grant on the advice of a donor		ArtsSmarts Program	
Laurentian High School	\$500	Na'amat Ottawa	\$4,476
Organizational endowment income		To provide school supplies for children in women's shelters	
Leadership Ottawa	\$10,000	The Nadasdy Foundation for Fine Arts and the Environment	\$600
To ensure continued success of the programs of Leadership Ottawa, professional development programs for emerging decision-makers		Two grants on the advice of donors	
Leprosy Mission Canada	\$1,000	National Aboriginal Achievement Foundation	\$10,000
Grant on the advice of a donor		Grant on the advice of a donor	
Lifetime Networks Ottawa (LNO)	\$5,000	National Arts Centre Foundation	\$15,056
To encourage persons with disabilities to use a variety of educational and artistic activities to explore their personal vision for the future and share those visions with the community at large		Three grants on the advice of donors	

The National Ballet School \$6,064
Two grants on the advice of donors

The National Broadcast Reading Service \$250
Grant on the advice of a donor

National Capital Sports Council of the Disabled \$10,550
• To fund additional dragon boat practices to allow a blind and visually impaired team to complete at the Ottawa Dragon Boat Festival \$2,000
• To purchase 30 carbon fibre paddles to replace their wooden ones \$4,500
• To purchase 30 new PFD's for their blind and visually impaired Dragon Boat team \$3,600
• Grant on the advice of a donor \$450

National Gallery of Canada Foundation \$1,000
Grant on the advice of a donor

Neil Squire Foundation \$6,000
To purchase an electric page turner and various switch accessories for people with physical disabilities

Nelson House of Ottawa-Carleton \$10,250
• To provide access to housing options in Ottawa for women and children at Nelson House and Harmony House \$10,000
• Grant on the advice of a donor \$250

Nepean Community Resource Centre \$9,500
• To provide sewing instruction for immigrant and multicultural women in the Bayshore area with a trained ESL instructor \$5,000
• To provide workshops on various aspects of elder abuse \$4,500

Nepean High School \$600
Organizational endowment income

La Nouvelle Scène \$5,000
To equip six theatre seats with special equipment designed to enable hard of hearing and deaf theatre attendees to follow live productions

OCRI - Volunteers in Education \$5,000
To assess current volunteer participation, identify barriers and opportunities and create appropriate management protocols to build volunteer capacity in high schools

Odyssey Theatre \$5,915
• To provide training for eight to twelve young actors who will form a permanent local touring troupe to perform at special events in the community \$1,500
• To present "Pay What You Can," a Community Matinee Series of performances \$1,000
• Two grants on the advice of donors \$3,415

The Ontario Lupus Association, Ottawa Branch \$2,000
To help patients increase their family's and the public's awareness and understanding of lupus

Opera Lyra Ottawa \$4,589
• To mount a new Canadian opera for young audiences and families entitled "Zeus and the Pamplemousse" \$4,000
• Two grants on the advice of donors \$589

Operation Eyesight Universal Foundation \$1,200
Grant on the advice of a donor

Operation Go Home \$34,000
To assist in funding an alternative education program for street youth at Operation Go Home

Osgoode Township High School \$246
Grant on the advice of a donor

The Ottawa Art Gallery \$20,628
• Five grants on the advice of donors \$18,578
• Organizational endowment income \$2,050

Ottawa Blind Bowling Club \$2,442
To support a team of six bowlers plus their guides to participate in the Ontario Blind Bowling Tournament

Ottawa Blind Curling Club \$1,600
Grant on the advice of a donor

Ottawa Chamber Music Society \$5,000
To support the 10th anniversary of Family Music Fair

Ottawa Children's Festival \$5,000
To fund a presentation of "A Strange Man", designed for young audiences

Ottawa Children's Treatment Centre Foundation	\$5,028	The Ottawa Rape Crisis Centre	\$5,000
· To support the "Tweens Spina Bifida Camp" which provides a recreational and functional approach to teaching and practicing life skills for pre-teens with Spina Bifida	\$3,800	To deliver workshops to women survivors of sexual assault and childhood sexual abuse	
· Grant on the advice of a donor	\$1,000	Ottawa Regional Cancer Centre Foundation	\$1,185
· Organizational endowment income	\$228	Three grants on the advice of donors	
Ottawa Community Immigrant Services Organization	\$250	Ottawa Regional Youth Choir Society	\$4,210
Grant on the advice of a donor		· To purchase a portable electronic keyboard and amplifier for use at rehearsals and performances	\$2,910
Ottawa Community Loan Fund	\$55,150	· Two grants on the advice of donors	\$1,300
· 2003 Investing in People Award to George Brown of the Ottawa Community Loan Fund	\$5,000	Ottawa Rotary Home Foundation	\$1,572
· To create a pool of capital for the Ottawa Community Loan Fund thereby assisting them to reduce the cost of capital for their borrowers	\$50,150	Two grants on the advice of donors	
The Ottawa Food Bank	\$26	Ottawa Salus Corporation	\$8,000
Grant on the advice of a donor		· To enable tenants in supportive housing to attend training sessions so they can participate in and organize tenant associations	\$5,000
Ottawa Foyers Partage - ComputerWise	\$2,500	· Grant on the advice of a donor	\$3,000
To teach new web-based skills to their clients and team members, by hosting their website and email in-house		The Ottawa School of Art	\$958
The Ottawa Hospital Foundation	\$352,572	· Grant on the advice of a donor	\$458
Thirteen grants on the advice of donors		· Educational award on the advice of a donor	\$500
Ottawa Humane Society	\$12,660	Ottawa Storytellers	\$1,000
· To support the Foster Family Special Diet Project, providing essential medical and nutritional supplements to foster animals thereby increasing their health and adoptability	\$7,800	To present a series of 5 evening concerts in partnership with the National Arts Centre	
· Five grants on the advice of donors	\$4,632	Ottawa Symphony Orchestra	\$6,500
· Organizational endowment income	\$228	· To present an outdoor concert of symphonic music as part of the Canadian Tulip Festival's special Mother's Day program	\$1,200
Ottawa International Jazz Festival	\$5,000	· Investing in People Award for David Currie	\$5,000
To help fund a new series called "Women in Jazz" at the 2003 festival		· Grant on the advice of a donor	\$300
Ottawa Music Club	\$600	Ottawa Talmud Torah Afternoon School	\$500
Grant on the advice of a donor		Grant on the advice of a donor	
Ottawa Peace and Environment Resource Centre	\$5,000	Ottawa Technical Learning Centre	\$2,800
Grant on the advice of a donor		Organizational endowment income	
Ottawa Public Library	\$6,877	Ottawa Torah Institute High School	\$149,500
· Six grants on the advice of donors	\$6,419	Three grants on the advice of donors	
· Organizational endowment income	\$458	Ottawa Valley Book Festival	\$659
		Grant on the advice of a donor	
		Ottawa Valley Wild Bird Care Centre	\$300
		Grant on the advice of a donor	

Ottawa West End Community Chaplaincy To repair and restore a portable classroom that is essential meeting space for the Morrison Gardens Public Housing Neighbourhood	\$4,084	Pinecrest-Queensway Health & Community Services ArtsSmarts Program	\$50
Ottawa Youth Chess Club Grant on the advice of a donor	\$500	Pink Triangle Services To create a speakers bureau to meet an increasing number of requests for informative talks on homosexual-related topics	\$2,000
Ottawa Youth Orchestra Academy • To replace worn-out timpani (kettle drums) • Two grants on the advice of donors	\$8,725 \$5,500 \$3,225	Planned Parenthood Federation of Canada Grant on the advice of a donor	\$2,962
Ottawa-Carleton Catholic Board District School Grant on the advice of a donor	\$970	Planned Parenthood Ottawa-Carleton To fund a forum theatre program created and performed by youth, designed to stimulate discussion and reflection about sexual health and youth issues	\$5,000
Ottawa-Carleton District School Board Three grants on the advice of donors	\$4,289	Plant Pool Recreation Association Grant on the advice of a donor	\$500
Our Lady's Missionaries Grant on the advice of a donor	\$500	Project Upstream Ottawa- Carleton Inc. • To support mentally ill persons and their families in dealing with their illness and related issues such as poverty, isolation and reduced employment opportunities • Grant on the advice of a donor	\$5,000 \$3,000 \$2,000
Palliative Care Outreach Program • To help pay for massage therapy for patients with lymphedema secondary cancer and to provide respite support to caregivers • Grant on the advice of a donor	\$10,250 \$10,000 \$250	Queen's University Educational award on the advice of a donor	\$1,000
Parent's Lifelines of Eastern Ontario To provide families of severely mentally ill children and youth with peer encouragement and information, in order that they can continue to provide home support for their children	\$6,000	Rainbow Skills Development Centre Grant on the advice of a donor	\$1,000
Parkinson's Society of Ottawa Two grants on the advice of donors	\$2,112	Rakoczi Foundation Inc. Three grants on the advice of donors	\$800
The PATH Foundation of Canada Three grants on the advice of donors	\$184,406	Reach - Equality and Justice for People with Disabilities To develop three workshops explaining legal issues to persons with disabilities, family members and service providers	\$4,000
The Perley & Rideau Veterans' Health Centre • To fund the Summer Youth Volunteer Program at the long-term care facility • Two grants on the advice of donors • Organizational endowment income	\$6,016 \$4,000 \$845 \$1,171	Rehabilitation Centre Volunteer Association To renovate the coffee kiosk to increase accessibility, functionality and safety	\$5,000
Pierrot Concerts Grant on the advice of a donor	\$169	Richard Pfaff Secondary Alternate Program Educational award on the advice of a donor	\$225
Pinecrest Terrace Community House To cover fees, footwear and transportation so youth at the Community House can play soccer and other sports outside of their own community	\$5,000	Rideau Street Youth Enterprises To provide automotive on-the-job training to youth at risk by providing them with the opportunity to build a kit car	\$10,000

Rideauwood Addiction & Family Services	\$52,000	The School of Dance	\$9,451
· To provide adequate, stable funding to offer substance abuse programs in twelve high schools and at St Mary's Home		· To present "Stages", a series of five performances at the Fourth Stage of the National Arts Centre, illustrating the different stages of training for a dancer	\$1,800
· Emergency Bridge Funding to continue operating the substance abuse program	\$50,000	· To provide dance training, peer interaction and physical exercise for children who are physically disabled	\$5,000
	\$2,000	· Four grants on the advice of donors	\$2,651
Robert E. Wilson School	\$4,000	SCO Health Service Foundation	\$3,375
Grant on the advice of a donor		Four grants on the advice of donors	
Roland Michener Public School	\$250	Shepherds of Good Hope	\$41,856
Organizational endowment income		· To provide funding for the Managed Alcohol Program for a six-month period	\$35,000
The Royal Canadian Geographical Society	\$200	· Three grants on the advice of donors	\$6,856
Grant on the advice of a donor		Sierra Youth Coalition	\$250
The Royal Conservatory of Music	\$705	Grant on the advice of a donor	
Grant on the advice of a donor		Sir Guy Carleton Secondary School	\$400
Royal Ottawa Health Care Foundation	\$2,583	Organizational endowment income	
Two grants on the advice of donors		Sir Robert Borden High School	\$700
Saint Paul University	\$8,617	Organizational endowment income	
· Three educational awards on the advice of donors	\$4,167	Sir Sanford Fleming College	\$2,500
· Grant on the advice of a donor	\$4,450	Educational award on the advice of a donor	
Sainte-Thérèse-d'Avila ArtsSmarts Program	\$50	Sir Wilfrid Laurier Secondary School	\$1,000
Salamander Theatre for Young Audiences	\$1,000	Organizational endowment income	
To provide training by local professional actors to emerging youth actors		Social Planning Council of Ottawa	\$3,500
Salvation Army	\$8,782	To increase the community's capacity to define and respond to barriers faced by persons with disabilities	
Four grants on the advice of donors		Society for Educational Visits in Canada and Exchanges	\$500
The Salvation Army Sylvia House	\$2,000	Grant on the advice of a donor	
To support caregivers and volunteers dealing with the psychological and physical impact following the death of a loved one		Soloway Jewish Community Centre	\$5,500
Schizophrenia Society of Canada	\$1,000	· To purchase wool so their volunteer knitters can create hats, scarves, afghans and other items for those in need in the community	\$2,000
Grant on the advice of a donor		· To assist in the provision of an all-day recreational and social program for older adults unable to access programming due to mobility restrictions or financial disadvantages	\$3,500
Schizophrenia Society of Ontario - Ottawa-Carleton Chapter	\$8,000	SOS Children's Villages Canada	\$5,282
To fund the first phase of a volunteer training program		Organizational endowment income	
School Breakfast Program	\$30,000		
Grant on the advice of a donor			

South Carleton High School \$15,402
Organizational endowment income

Space Camp for Visually Impaired Kids Group \$13,888
To send six to eight children with visual impairments and three chaperones to Space Camp and Space Academy at the US Space and Rocket Centre in Huntsville, Alabama

St. Brigid's Summer Camp \$2,650
To upgrade the washroom facilities at camp to meet environmental regulations

St. Elizabeth Catholic School \$50
ArtsSmarts Program

St. Francis Xavier University \$300
Educational award on the advice of a donor

St. George's Parish \$9,533
Grant on the advice of a donor

St. Lawrence College \$1,200
Educational award on the advice of a donor

St. Margaret Mary's Church \$4,200
To replace the commercial dishwasher to ensure that they meet health standards in their kitchen

St. Mary's Home/Maison Sainte-Marie \$247
Organizational endowment income

St. Matthew's Harmony House \$14,000
To purchase a play structure and garden for the children at Harmony House

St. Patrick's Home of Ottawa Foundation \$12,000
To purchase feeding tables and chairs for their decentralized dining project

Sts. Peter & Paul Melkite Faith Catholic Church \$1,000
Educational award on the advice of a donor

St. Vincent Hospital Foundation \$30,000
Two grants on the advice of donors

Stanstead College \$500
Grant on the advice of a donor

SuzukiMusic (National Capital Suzuki School of Music) \$2,000
To produce and tour "L'histoire de Bytown" for children in French

Tamir Foundation \$5,572
• To purchase computer/camera equipment and offer Photoshop training to Tamir participants \$5,000
• Grant on the advice of a donor \$572

TELCI \$6,500
To create a garden that will provide a sensory stimulating park-like setting for the enjoyment of visually impaired people

Tetra Society of North America, Ontario \$10,000
To purchase two specially designed off-road wheelchairs and launch a new program called "Take a Hike, Ottawa" which will allow disabled people to have access to parks and wilderness areas

Théâtre la Catapulte \$4,366
• To present "La meute" to the public in the evening and to youth at school during the day \$2,866
• To do additional marketing mid-way through their season to increase sales of productions targeted to youth \$1,500

Le Théâtre des Lutins \$2,000
To produce and present a play for children and families during the holiday season

Théâtre du Trillium \$5,000
To workshop and present "La peau d'Élisa" as a way to further develop their audience

Théâtre de la Vieille 17 \$7,000
To present a play called "Les cascadeurs de l'imaginaire"

Thirteen Strings Chamber Orchestra \$200
Grant on the advice of a donor

Torah Academy of Ottawa \$337,000
Three grants on the advice of donors

Total Communication Environment \$27,500
Two grants on the advice of donors

Trent University \$4,500
Educational award on the advice of a donor

The TVOntario Foundation \$200
Grant on the advice of a donor

Unitarian Service Committee of Canada \$1,200
Grant on the advice of a donor

United Way of Leeds and Grenville Grant on the advice of a donor	\$100	West Nepean Ecumenical Residential Projects To replace a ten year old van which transports seniors to adult day programs, shopping and religious services	\$4,389
United Way/Centraide Ottawa • Four grants on the advice of donors	\$1,105,090	Wildlife Habitat Canada – for the Wetland Habitat Fund Program To help fund programs promoting stewardship of significant wildlife habitats	\$2,000
• Transfer of legacy funds	\$58,282	Woodroffe High School Educational award on the advice of a donor	\$1,000
University of Ottawa • Nineteen educational awards on he advice of donors	\$32,641	The Woods Grant on the advice of a donor	\$763
• Grant on the advice of a donor	\$27,641	World Federalist Foundation Grant on the advice of a donor	\$246
University of Ottawa Heart Institute Foundation Four grants on the advice of donors	\$52,070	World Inter-Action Mondiale To develop modules for teachers on human rights and education to encourage their students to become responsible citizens	\$5,000
University of Ottawa Institute on Health of the Elderly Grant on the advice of a donor	\$39,400	Yeshiva Sisterhood of Ottawa Three grants on the advice of donors	\$149,500
University of Toronto Educational award on the advice of a donor	\$5,000	National Capital Region YMCA-YWCA Grant on the advice of a donor	\$960
University of Victoria Educational award on the advice of a donor	\$1,000	York University Educational award on the advice of a donor	\$750
University of Waterloo Educational award on the advice of a donor	\$4,500	Youth Net To fund the Vent, a drop-in forum where youth can discuss issues of concern to them	\$7,500
Venta Preparatory School Grant on the advice of a donor	\$10,000	Y's Owl Maclure Co-operative Centre • To create a summer day support program for individuals with developmental disabilities	\$4,000
Victorian Order of Nurses (VON) Ottawa–Carleton Branch Grant on the advice of a donor	\$200	• Grant on the advice of a donor	\$3,000
Volunteer Canada To provide operating support over a 5-year period for Volunteer Place Bénévoles, a meeting planning service run by volunteers	\$10,000	The Zonta Club of Ottawa Educational Fund Organizational endowment income	\$2,449
The Waupoos Foundation • To assist in funding the summer recreation program for the families vacationing at Waupoos Farm, a facility offering rural vacations to lower-income families	\$5,244		
• Grant on the advice of a donor	\$5,000		
	\$244		
The Well/La Source To replace an industrial stove to serve the homeless	\$2,800		
West Carleton Secondary School Organizational endowment income	\$1,200		
West End Achievers Grant on the advice of a donor	\$414		

Administration and Sponsors

We work hard to keep the administrative costs of running the Community Foundation low. We want to dedicate the maximum possible amount of the funds in our trust to community initiatives. Accordingly, the Community Foundation has established a policy that caps the administrative fee on the endowment funds under its care. For capital funds of \$5 million or less, the fee is 1.5%; on capital funds in excess of \$5 million, the fee decreases. Educational award funds are the only exception, with an administration fee of 2% (as of January 1, 2004). These terms compare very favourably with those of most other charitable organizations.

Equally important are the voluntary contributions of individuals and organizations around the region who help offset our expenses through their financial contributions or generous donations of their time, goods and services.

Gifts to the Foundation's Operating Endowment Fund support our work and provide long-term stability. We are grateful to our Board members and other friends of the Community Foundation for their contributions to this endowment.

Volunteers

Sarah Beauregard
George Brown
Matthew Claydon
Ann Diamond
Joan Gamble
Shane Kelly

Matthew Kelly
Michelle Masson
Chris McKillop
Raisa Patel
Ted Paterson
Allan Rix

Richard Slowikowski
Jocelyn St. Jean
Bronwyn Thomson
Mary Wiggins
Penelope Williams

Generous Contributors to Operations and Special Projects

BMO Financial Group
Bell Canada
Bypass Printing & Copy Centre Inc.
Canadian Centre on Substance Abuse
Canadian Museum of Nature
CAPCORP Planning Limited
Communications Granger
Deloitte & Touche LLP

P.J. Doherty & Associates Co. Ltd.
Gowling Lafleur Henderson LLP
Navasys Group
Ottawa Citizen
Superior Shuttle Hi-Tech
The New RO
Lisa Wilkins Consulting

Celebration 2003 Volunteers

Janet Barker and the Visually Impaired
Space Campers
Joanne di Cosimo
Yvonne Coutts, Le Groupe Dance Lab

John McKnight
Russell Mills
Shirley Westeinde

Staff



Matthew Claydon

Back row (from left): *Rick Steggall, Gillian Whyte, Nadia Reid, Edna McCallion, Janet Rasmussen, Alice Birnbaum, Christine Valois*

Front row (from left): *Annie Grenon, Barbara McInnes, Bibi Patel, Georgette Houle*

Alice Birnbaum, Associate, Marketing and Communications

Annie Grenon, Director, Corporate Services (resigned in 2004)

Georgette Houle, Director, Grantmaking Programs

Lisset Lopez, Finance Assistant (maternity leave)

Edna McCallion, Assistant, Grantmaking Programs

Barbara McInnes, President & CEO

Bibi Patel, Director, Development and Donor Services

Janet Rasmussen, Assistant, Development and Donor Services

Nadia Reid, Finance Assistant

Carrie-Anne Scharfe, Accounting Assistant (maternity leave)

Rick Steggall, Accountant

Christine Valois, Administrative Assistant

Gillian Whyte, Associate, Donor Services

Financial Statements

Community Foundation of Ottawa
December 31, 2003

Auditors' Report
To the Members of
Community Foundation of Ottawa

Deloitte.

The accompanying summarized balance sheet, statement of operations and notes are derived from the complete financial statements of the Community Foundation of Ottawa as at December 31, 2003 and for the year then ended on which we expressed an opinion without reservation in our report dated February 13, 2004. These financial statements and the complete financial statements are the responsibility of the Foundation's management. Our responsibility, in accordance with the applicable Assurance Guideline of The Canadian Institute of Chartered Accountants, is to report on the summarized financial statements.

In our opinion, the accompanying financial statements fairly summarize, in all material respects, the related complete financial statements in accordance with the criteria described in the Guideline referred to above.

These financial statements do not contain all the disclosures required by Canadian generally accepted accounting principles. Readers are cautioned that these statements may not be appropriate for their purposes. For more information on the Foundation's financial position, results of operations and cash flows, reference should be made to the related complete financial statements.

Deloitte + Touche LLP

Chartered Accountants
February 13, 2004

Deloitte and Touche LLP
100 Queen Street Suite 800
Ottawa, Ontario
K1P 5T8
Tel: (613) 236-2442
Fax: (613) 236-2195
www.deloitte.ca

Statement of Operations and Changes in Fund Balances

year ended December 31, 2003

(in \$000's)

	Endowment Funds		Externally Restricted Funds for Distribution		Operating Fund		Interfund Eliminations		Total	
	2003	2002	2003	2002	2003	2002	2003	2002	2003	2002
Revenue										
Donations	\$ 4,392	\$ 4,170	\$ 506	\$ 728	\$ 22	\$ 41	\$ -	\$ -	\$ 4,920	\$ 4,939
Investment earnings on endowments (Note 1)	6,316	810	-	-	-	-	-	-	6,316	810
Funds for distribution (Note 1)	-	-	2,760	2,495	-	-	(2,760)	(2,495)	-	-
Administration fee (Note 1)	-	-	-	-	772	732	(772)	(732)	-	-
Other investment earnings	-	-	-	38	91	52	-	-	91	90
Projects	-	-	-	-	28	64	-	-	28	64
	10,708	4,980	3,266	3,261	913	889	(3,532)	(3,227)	11,355	5,903
Expenses										
Funds for distribution (Note 1)	2,760	2,495	-	-	-	-	(2,760)	(2,495)	-	-
Grants to third parties	-	-	5,747	3,830	-	-	-	-	5,747	3,830
Salaries and benefits	-	-	-	-	702	584	-	-	702	584
Administration fee (Note 1)	772	732	-	-	-	-	(772)	(732)	-	-
Other	-	-	-	-	282	259	-	-	282	259
Amortization of capital assets	-	-	-	-	12	35	-	-	12	35
	3,532	3,227	5,747	3,830	996	878	(3,532)	(3,227)	6,743	4,708
Excess (deficiency) of revenue over expenses before unusual item	7,176	1,753	(2,481)	(569)	(83)	11	-	-	4,612	1,195
Investment write-down (Note 2)	-	(648)	-	(215)	-	-	-	-	-	(863)
	7,176	1,105	(2,481)	(784)	(83)	11	-	-	4,612	332
FUND BALANCES, BEGINNING OF YEAR	59,402	57,312	5,700	7,522	177	113	-	-	65,279	64,947
Interfund transfers	(1,134)	985	1,080	(1,038)	54	53	-	-	-	-
FUND BALANCES, END OF YEAR	\$ 65,444	\$ 59,402	\$ 4,299	\$ 5,700	\$ 148	\$ 177	\$ -	\$ -	\$ 69,891	\$ 65,279

Balance Sheet

as at December 31, 2003

(in \$000's)

	Endowment Funds	Externally Restricted Funds for Distribution	Operating Fund	Total	
				2003	2002
CURRENT ASSETS					
Cash and short-term deposits	\$ 13	\$ 621	\$ 108	\$ 742	\$ 445
Accounts receivable	-	-	20	20	48
Accrued interest receivable	334	-	5	339	384
Prepaid expenses	-	-	30	30	11
	347	621	163	1,131	888
INVESTMENTS (Note 2)	65,097	4,380	-	69,477	65,109
CAPITAL ASSETS	-	-	17	17	15
	\$ 65,444	\$ 5,001	\$ 180	\$ 70,625	\$ 66,012
CURRENT LIABILITIES					
Accounts payable	\$ -	\$ -	\$ 32	\$ 32	\$ 25
Grants payable	-	702	-	702	680
Deferred project funding	-	-	-	-	28
	-	702	32	734	733
FUND BALANCES					
Investment in capital assets	-	-	17	17	15
Endowment Fund - Capital	62,278	-	-	62,278	59,020
Endowment Fund - Reinvested earnings (Note 1)	3,166	-	-	3,166	382
Other	-	4,299	131	4,430	5,862
	65,444	4,299	148	69,891	65,279
	\$ 65,444	\$ 5,001	\$ 180	\$ 70,625	\$ 66,012

APPROVED BY THE BOARD

Robert H. ...
Scott A. Wilson

Notes to the Financial Statements

year ended December 31, 2003

(in thousands of dollars)

I. DISTRIBUTION AND REINVESTMENT OF ANNUAL INVESTMENT EARNINGS

The Foundation's Distribution Policy determines the amount of the distributions from the Foundation's annual investment earnings to cover charitable grants and administrative costs. The Foundation's Reinvestment Policy determines the portion of the Foundation's annual investment earnings to be reinvested in the endowment funds to provide a reserve against both inflation and lower investment returns. Together, these two policies are designed to allow a reasonably predictable outflow of funds for charitable grants over the long term.

On an annual basis the Board of Governors establishes the level of distribution and reinvestment, taking into account various factors including community needs, the current level of reinvested earnings, and the investment income earned in the year.

In 2003, investment earnings totaling \$6,316 (2002 - \$810) were allocated as follows:

	<u>2003</u>	<u>2002</u>
Administration fee for current year	\$ 772	\$ 732
Distribution of funds (a)	2,760	78
Endowment Funds - reinvestment	2,784	-
Total earnings allocated	<u>\$ 6,316</u>	<u>\$ 810</u>
Additional distribution from endowment funds (b)	\$ -	\$ 2,417
Total distribution of funds (a + b)	<u>\$ 2,760</u>	<u>\$ 2,495</u>

At December 31, 2003, the cumulative amount set aside to date, in Endowment Funds, to protect against lower investment returns and inflation was \$3,166 (2002 - \$382) an increase of \$2,784.

2. INVESTMENTS

Determination of carrying value

Cash and short-term investments which include investment certificates and treasury bills are valued at cost which approximates market value at the year-end.

Bonds and publicly traded shares are recorded at prices based on published market quotations at the year-end.

Notes to the Financial Statements

year ended December 31, 2003

(in thousands of dollars)

2. INVESTMENTS (Continued)

Shares in a private Canadian corporation are recorded at cost and are written down only when there has been a decline that is other than temporary. Cost was determined by an independent appraiser at the time of their donation to the Foundation.

Real estate is recorded at cost which was determined by an independent appraiser at the date of the donation. The expenses related to the management and upkeep of the property are funded by a designated endowment fund.

	2003		2002	
	Carrying Value	% of Carrying Value	Carrying Value	% of Carrying Value
Marketable securities, at market				
Government of Canada bonds	\$ 7,215	10	\$ 6,913	11
Provincial bonds	11,130	16	10,615	16
Municipal bonds	4,485	6	3,948	6
Corporate bonds	6,781	9	9,175	14
Government of Canada treasury bills	4,308	6	5,490	8
Bank and Trust Company guaranteed investment certificates	1,983	3	-	-
Canadian shares				
Common	14,326	21	12,371	19
U.S. shares	13,649	20	11,349	17
International stocks (Non U.S.)	5,038	7	4,686	7
Other investments				
Shares of a private corporation	262	1	262	1
Real estate	300	1	300	1
Total investments	\$ 69,477	100	\$ 65,109	100
Investments, at original cost	\$ 63,127		\$ 65,022	

In 2002, the Foundation wrote down the carrying value of shares of a private corporation by \$863 to recognize a permanent decline in the value of the shares. The carrying value is based on the best estimates by the private corporation's management of the current share value.

Family of Founders

Our appreciation is extended to the donors whose contributions in the early years helped the Community Foundation achieve its initial goal of \$5 million. All donors who contributed with a gift of \$5,000 or more are recognized permanently as our Family of Founders. Persons whose names appear in bold type were also members of, or advisors to, the Founding Board of Governors.

Founding Patrons (\$100,000 or more)

Anonymous	Morleen and Peter Doherty	Wilhelmina Kellam	Otto Scheffer
Evelyn and Herbert Balls	Donna and Gary DuBreuil	Bernard and Rose-Marie Langill	John M. Scott
The Belvedere Memorial	Alexander "Mac" Ervin	Peter Laverdière	SOS - Children's Villages Canada
Agnes Benidickson	O.J. Firestone	Dr. Lorne E. MacLachlan	Betty and Ralph A. Sparham
Brian Bockstael	Elaine Forbes	Donald and Joy Maclaren	Sally Swenson
Sybil Anne Brake	Shirley E. Greenberg	Michener Awards Foundation	Edwin and Dorothy Swimmings
Carleton University Students'	Kenneth Guarisco	Minto Foundation Inc.	Maximilian and Fleurette Ullyett
Charity Ball	Jane and Jim Hamilton	Michael J. Nichol	United Way of Ottawa-Carleton
John E. (Ian) Danby	Irwin Haskett	Mary Rose O'Keefe	
Paul and Adelle Deacon	Joan and Gordon Henderson	Ottawa Association for the Blind	
John and Jean Doherty	Margaret E. Hill	Ottawa Citizen	

Founding Benefactors (\$25,000 to \$100,000)

Anonymous	Marc Denhez	John L. Kelly	Ottawa Art Gallery
Ernest and Mary Assaly	Andrew Doyle	William T. Kennedy	Ottawa Handicapped Association
Cynthia Baxter	James Robin Findlay	Gile E. LaBine	Bernard Ouellet
John C. Burrows	E. Richard Fisher	Allan H. Le Neveu	Charles-Eugène Ouellet
Canada Post Corporation	Fund for a New Generation	Gordon J. McCay	Jean C. Paradis
City of Ottawa Charitable Foundation	Margaret and Alastair Gamble	James A. Millar	Carrol Simpson
Sylvain Cloutier Memorial	Harriet and Walter M. Guance	Jean Mooney	Frederick Sirotek
Iris Craig	E. Suzanne Halpenny	Mariette Nadon	Muriel and Harold Taggart
Ann F. Crain	Mary Vincent Hill Memorial	Mary and Wesley Nicol	Women's Business Network
	Bernice Keenleyside	Peter Ool	

Founding Donors (\$5,000 to \$25,000)

Patricia Adelman	Catherine Di Ianni	Mary E. Macdonald, CM	Muriel Scott
Bert Beaulieu	Helen and Arnold Earl	Meiz M. Majdoub	Dave Smith
Senator W.M. Benidickson	Elaine Garfinkel	Leanora D. McCarney	Doris M. Smith
Beth Bertram	Greenhaven Foundation	Dr. Rebecca McDermott	Ruth and Hyman Soloway
V.H. Beutenmiller	Jerry Grey	Barbara and Glenn McInnes	Soloway, Wright, Victor
John J. Bull	William Grossman	Peter Middleton	Bill Thornton
Hazel and Edwin R.G. Burgess	Marguerite (Grete) Hale	Mervin Mirsky	Jane Thornton
Elinore and Vince Calzonetti	Jacquelin Holzman	Gerard Myers	John Alban Trainor
Douglas and Karen Cameron	Jean Huckabone	George Nelms	Dr. F.R. Wake
Neta F. Clarke	Barbara Ingram	John H. Nelms	R. Howard Webster Foundation
Canada Trust Co.	IODE - Lord Dundonald Chapter	Raymond J. Ostiguy	West End Achievers
Canada-U.S. Fulbright Program	KEY Radio Limited Ottawa	Ottawa PC Users Group	John and Shirley Westeinde
Suzanne Cornforth	Valerie Knowles	Ottawa Police Services Board	Margaret P. Wetzel
Coughlin & Associates Limited	Donald and Dolores Langill	Ottawa Senators	George and Delphin White
John Crow	David and Joyce Loeb	Roberta Pollock	
James and Norma Davies	Mary Louise Lynch	G. Edward Reed	
Rob Dempster	Macdonald Club	Rotary Club of Ottawa	

The Community Foundation of Ottawa is an independent centre for community philanthropy, serving as a trusted resource for addressing issues and connecting donors with granting opportunities. It plays a major role in enhancing the nature and scope of philanthropy, primarily in the local community but also nationally and internationally. It attracts and manages a growing endowment, the invested earnings of which provide grants that will be available forever to enhance the quality of life for all in the region.



For Good. Forever. Le bien...toujours

75 Albert Street, Suite 301, Ottawa ON K1P 5E7 Tel: 613.236.1616 Fax: 613.236.1621
info@communityfoundationottawa.ca www.communityfoundationottawa.ca
Charitable Registration number 11922 7981 RR 0001